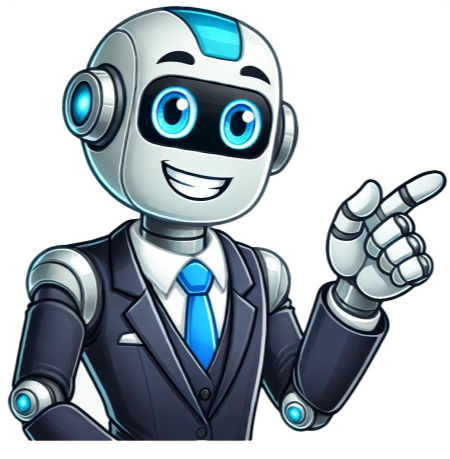


[Click Here](#)







**Draw a square with 3 lines answer**

Using only 3 straight lines, draw a square. Using only 2 lines, it's impossible to create a shape with 4 sides and 4 angles. You can create other shapes like triangles, parallelograms, rectangles, trapeziums, pentagons, and more by using different combinations of pieces. To solve the problem, we need to understand that drawing a square with only 2 lines is not possible because it requires at least 4 connected lines to form its defining characteristics. This includes four sides and four angles, which cannot be created with just two lines. The steps to draw a square of side 4.5 cm involve using the three-sides-and-two-angles method, where we first draw one side AB of length 4.5 cm. Then, we construct right angles at points A and B by drawing arcs with a radius of 4.5 cm from these points. Finally, we join the intersecting points to form the square ABCD. Parallel lines are those that never meet, while perpendicular lines meet at a right angle (90°). To draw a parallel line, one can use a set square and place it along the given line XY so that another short side of the set square touches point P. Then, by sliding the set square along the ruler until the other short side touches point Q, we can draw the desired parallel line ST // XY. Similarly, to draw a perpendicular line, one places a set square on the line XY with one short side touching it and moves the set square so that the other short side passes through point P. Then, by using the edge of the set square, we can draw the desired perpendicular line ST ⊥ XY. It is also important to note that horizontal lines are parallel to each other and to the level floor, while vertical lines are perpendicular to the level floor. A horizontal line and a vertical line are always perpendicular to each other.