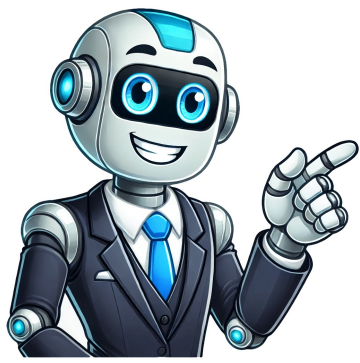


I'm not a bot



Test the lights by pressing their power buttons once. If they dont start blinking, repeat the battery insertion step, double-checking that the polarity is correct. Test the battery quality with a multimeter to confirm that it falls in the good range. Dont combine old and new batteries in the same bicycle light. Bell Sports Corp., based in Scotts Valley, California, sells bicycle lights and other accessories. Its battery-powered taillight fits on the seat post to make the rider visible at night via a flashing red signal. The headlight attaches via a separate bracket to the handlebar to illuminate the road ahead. Check the packaging when you buy the lights; separate batteries are likely required. Insert a penny in the slot at the bottom of the taillight where the cover and base meet. Lever the cover with the coin so the cover pops off. Capture the rubber seal and replace it if it falls off; it likely will stay in place on the cover. Place two AAA batteries in the battery compartment so the positive end of each battery (marked by a plus sign) lines up with the "plus" mark in its compartment. The batteries will be facing in different directions. Press the rubber seal onto the edge of the cover if it became displaced in Step 1. Squeeze the cover back in place until you hear a snap confirming that it seated. Pinch the silver rim on the sides and rear of the headlight and pull its housing up and back. Insert four AA batteries in the headlight, again matching the batteries positive marks with the "plus" marks in the battery compartment. Line up the housing with the battery cover and push it straight down in place until you hear a click. Posted by Russell Wright on June 26, 2010 I received a Bell Night Shield tail light for my bike on my birthday and of course, it requires that batteries are installed. Two AAA batteries is all it needs. After removing it from its packaging, I read the measly instructions. You can see them hereand I quote:To install batteries, wedge a coin into the groove in the bottom of the cabinet and twist install 2 AAA batteries as indicated in the cabinet.Stretch bracket around seat post. Use rubber inserts to fit as needed.Serrated bracket fits to clamp. Insert knob and tighten.Slide light onto bracket. Adjust light so it faces rearward using twist knob.To remove the light from bracket, push back tab and slide.So step 1 is/are the entire battery installation instructions. I did as instructed and off popped the red cover. Underneath are the LEDs and silver cover for the circuit board. Somehow I was determined that all of that would lift out and I would see the battery cabinet. Luckily I stopped before going too far. After looking closely, I could see that there appeared to be another piece that could be separated/removed. Sure enough, the piece on the left is what really needed to be separated from the battery compartment, not the red cover.When you insert a coin to split the case, make sure you go under the red gasket and dont catch the red light coverwhich is really easy to do. I think the red light cover comes apart more easily than the battery compartment. To ensure our content is always up-to-date with current information, best practices, and professional advice, articles are routinely reviewed by industry experts with years of hands-on experience. Reviewed by on Mar 20, 2023 Bicycle light Replacement batteries Battery charger Flathead screwdriver Nickel or quarter Bicycle light Replacement batteries Battery charger Flathead screwdriver Nickel or quarter Replacing bicycle light batteries is largely a matter of the brand and model of the light, as well as the type of batteries it uses. While some bicycle lights use standard AA batteries, others require NiMH or Li-ion rechargeable batteries, or pairs of disc batteries. Different bike lights also have widely different methods for removing the casing in order to get to the batteries to be replaced. Batteries for different bicycle lights do not all have the same replacement frequency. Some batteries may only last a few weeks or months, while recent technology has increased battery life of some types to a year or longer. Lastly, some bicycle lights must use an external battery pack to supply them with power. Assuming your bicycle light affixes to the handlebars and uses an internal battery, its replacement is not difficult. Step 1: Remove Light from BracketOnce you realize that the battery in your bicycle light is dead and either needs replacing or recharging, remove it from its mounting bracket. How this is done will depend on the light. Some have a button you press to release its lock, while others simply slide off a track. Step 2: Open Light CasingThis procedure also depends on the construction of the bicycle light. While some bicycle lights have a cap attached to the main shaft of the light, others come with a casing that snaps into place over the internal mechanism and battery chamber. Those with caps usually have to be twisted from their locked state to open them up, sort of like an aspirin bottle. Depending on the quality of the light, they can be quite securely fastened. Bicycle light covers that snap into place will have a small opening at one end. Into this tab place a flathead screwdriver. You can also use a coin that is not too thick. Once in, use the leverage to pop the case in two. Whichever method your bicycle light uses, the batteries will then be visible and can be removed. When you get the batteries out of their chamber, you can either replace them or recharge them. Some lights use NiMH or NiCAD batteries that are rechargeable. Newer lights may have Li-ion batteries that are also rechargeable. After enough recharges, though, even they will have to be replaced. When replacing, match the old battery with a new set just like it. If the light uses disc batteries, make sure the replacements are of the right size and voltage. Step 4: Reassemble Bicycle LightOnce the batteries have been replaced and slid back into their chamber, either reattach the snap-together halves of the light casing or cap to the main shaft of the light. Turn the light on to make the batteries are in correctly and operational. Slide the light back onto its track on the mounting bracket,just like that, your bicycle light batteries have been replaced. Now that you know how to get inside of the light, replacement of the batteries in the future will be easy. SAVE 10%Sign up for newsletter Copyright 2025 MET-Helmets All rights reseved P.I. - VAT number 00744280140 How do you charge a bell bike light?To recharge light: Remove light from bicycle. Plug small side of included usb cable into back of light and the large end into your computer or any other powered USB outlet. The Indicator light will flash red while charging and change to green when charging is completed. Charge completely before first use. How do I change the battery in my Cateye Opticube?Cateye equips the light with a Drop-Out lock mechanism so you may remove the light from the mount when leaving the bicycle locked up. Unscrew the back battery housing panel and insert the three AAA batteries into the housing. Screw the panel back on and undo the ratchet strap completely. How do I turn off the Cateye light on my bike?To remove the light unit, pull out it forward while pressing * the button. To re-adjust the beam angle, loosen the dial enough * to move the bracket, and securely tighten it after adjustment.What batteries do bike lights take?Bike Light Batteries. Most USB-rechargeable bike headlights these days use a single 18650 battery internally, which is recharged through a USB port on the light. In most lights the battery is not user accessible. A few lights have a removable battery but contain the 18650 cell in a proprietary casing. How do you unclip a Cateye?Place the pad of your thumb on the lowest of the bottom of the Cateye computer , apply firm direct pressure away from the bracket. dont worry it alright its going to take some pressure to release it but push with your thumb away and toward the front of your bike and it will release. How do I reset my Cateye wireless? 1 Clear all data (initialization) Press the AC button on the back of the computer. 2 Select the speed units. Select km/h or mph. 3 Enter the tire circumference. Enter the front wheel tire circumference of your bicycle in mm. 4 Set the clock. 2 3. 60 cm. 5 mm. 2 Install the sensor and magnet. How do I reset my Cateye Micro Wireless?Re: Help to re-set my Cateye Wireless Computer You have to hold down the grey MENU button on the back for 2 seconds, release, and then press again for it to go into the settings mode.What is Opticube?Opticube is a new concept of solar thermal system making solar heat easier to afford and to install . All the complexity and hydraulics elements are integrated into a sea container, which makes it easy to transport, install and deploy on site (a 100m Opticube can be deployed in one day).How do you open headlights without baking?If you dont have access to an oven, you can also use a heat gun and a cardboard box. Get a box thats large enough to hold your headlight. Cut a circular hole in the bottom corner thats the same size as the heat guns nozzle.How do I turn off Cateye Micro Wireless? From the measurement screen, press MENU to switch to the menu screen. Measurement screen. Press MODE to display the screen shown below, and then press MODE for 2 seconds. (2 seconds) Switch off the functions you want to skip by moving to the relevant icon and turning the setting off. Press MENU to confirm settings. How do I reset my Cateye fast?When using the QUICK for the first time, con- figure the initial settings. 1 Clear all data. Press the AC button on the back of the QUICK. * All data is deleted and the QUICK is reset to its factory default settings.How do I turn on the light on my Cateye Padrone?Press the MENU button and the MODE button on the back of the computer. Press the AC button on the back of the computer. After full lighting of the screen, the computer switch- es to the speed unit setting screen to start setup.How do I change the battery in my Blackburn bike light?Batteries and Power Some Blackburn batteries and then replacement of the cover. The light has a yellow gasket that runs around the perimeter of the light; make sure you dont lose it when you take the cover off and make sure its in place when putting the cover back on. After I completed the change I found this post on eHow. Product Information & Help Bell makes a wide range of lights we'll help you choose a light that is best for you. The Radian Series lights allow you to be seen by others and is secured on your bike. The Meteor Series lights allow you to be seen by others and is easy to put on and take off your bike. The Lumina Series light provides extreme nighttime visibility. 2 Answers Was having the same trouble. Here's the trick. Hold the headlight in your hands, with the light facing forward and your hands cupped like you're trying to hold water in them (thumbs facing up). Now place your two thumbs on the TOP (not the sides) of the battery cover, just on either side of the switch at the front of the cover. Squeeze straight down on the cover with your thumbs, and curl your thumbs back toward you. Just a little bit of friction does it. 2 People thanked the writer. thanked the writer.

How to change batteries on bell bike light. Bell bike light instructions. How to change battery on bike light.