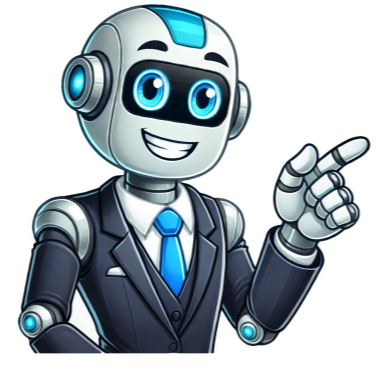


I'm not a bot









## Hemnes bed frame instructions

Given article text here Need manual for HEMNES (211x174) Bed Frame? Here's how to get one: To access the PDF manual, click on this link: [\[insert link\]](#) Product details: - Product type: Bed Frame - Dimensions: 211 x 174 cm - Average rating: 67/100 based on 55 votes and 15 comments. If you're not getting the desired results from the manual provided or believe it to be incorrect, please get in touch with us at [\[insert contact information\]](#). Before taking any action, check out these helpful tips: - Use pliers for safe removal of dowels, as using excessive force may cause them to lose grip. - Don't forget to visit your local IKEA store to pick up free screws and other hardware. - Follow the instructions backwards when disassembling your product, according to IKEA's advice. Using the right hardware when assembling an IKEA bed is crucial for a smooth installation process. A pair of pliers is recommended to remove the dowel, as applying too much pressure can cause the dowel to lose its grip. Some IKEA bed frames use the SKORVA midbeam, which needs to be purchased separately from the store. For optimal comfort, it's essential to have a mattress with a minimum thickness of 16cm. It's not possible to place a double mattress on an individually slatted bed base due to the varying height differences between both halves. Instead, each half requires a single mattress, and using a double mattress topper is also not feasible. A key difference between a bed frame and a box spring is that the former only holds a mattress, while the latter provides damping and ventilation through its metal coils. Adding a mattress on top of the box spring, along with possibly a mattress topper, can create a comfortable sleeping environment with good weight distribution and airflow. Generally, wooden bed frames are sturdier than their metal counterparts, requiring more frequent strength checks and screw tightening.