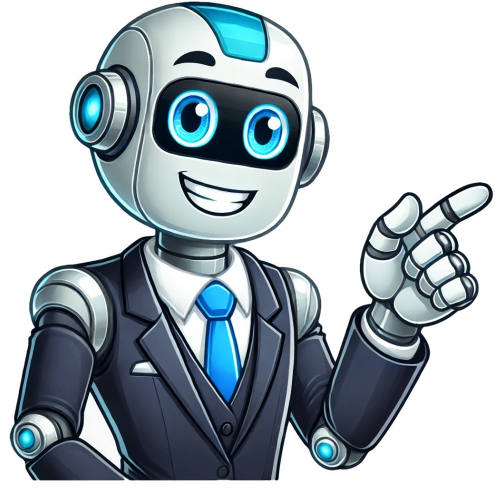


Continue































Page 1 Owners Manual FW0070, FW0100, FW0165, FW1226, FW1560, FW1900, FW2000, FW2500, FW2555, FW2570, FW2870, FW7040, FW7090 Fifth Wheel Installation, Operation, and Maintenance Procedures XL-FW482 Rev C... XL-FW482 Rev C · 2016-07-05 · Amendments and Errors Reserved · © SAF-HOLLAND, Inc., SAF-HOLLAND, HOLLAND, SAF, and logos are trademarks of SAF-HOLLAND S.A., SAF-HOLLAND GmbH, and SAF-HOLLAND, Inc. Non-Slip footwear is recommended. XL-FW482 Rev C · 2016-07-05 · Amendments and Errors Reserved · © SAF-HOLLAND, Inc., SAF-HOLLAND, HOLLAND, SAF, and logos are trademarks of SAF-HOLLAND S.A., SAF-HOLLAND GmbH, and SAF-HOLLAND, Inc. XL-FW482 Rev C · 2016-07-05 · Amendments and Errors Reserved · © SAF-HOLLAND, Inc., SAF-HOLLAND, HOLLAND, SAF, and logos are trademarks of SAF-HOLLAND S.A., SAF-HOLLAND GmbH, and SAF-HOLLAND, Inc. Page 5 62,500/70,000 lbs. 1/2" 1/2" 100,000 lbs. 3/4" 3/4" 165,000 lbs. 3/4" 1" XL-FW482 Rev C · 2016-07-05 · Amendments and Errors Reserved · © SAF-HOLLAND, Inc., SAF-HOLLAND, HOLLAND, SAF, and logos are trademarks of SAF-HOLLAND S.A., SAF-HOLLAND GmbH, and SAF-HOLLAND, Inc. XL-FW482 Rev C · 2016-07-05 · Amendments and Errors Reserved · © SAF-HOLLAND, Inc., SAF-HOLLAND, HOLLAND, SAF, and logos are trademarks of SAF-HOLLAND S.A., SAF-HOLLAND GmbH, and SAF-HOLLAND, Inc. Page 7 (Figure 3). The welds MUST be continuous around the bracket ends. XL-FW482 Rev C · 2016-07-05 · Amendments and Errors Reserved · © SAF-HOLLAND, Inc., SAF-HOLLAND, HOLLAND, SAF, and logos are trademarks of SAF-HOLLAND S.A., SAF-HOLLAND GmbH, and SAF-HOLLAND, Inc. Page 8 Figure 6 narrow frame widths. CENTER BOLT XL-FW482 Rev C · 2016-07-05 · Amendments and Errors Reserved · © SAF-HOLLAND, Inc., SAF-HOLLAND, HOLLAND, SAF, and logos are trademarks of SAF-HOLLAND S.A., SAF-HOLLAND GmbH, and SAF-HOLLAND, Inc. The plate to the top of the angle at the ends of the plate. XL-FW482 Rev C · 2016-07-05 · Amendments and Errors Reserved · © SAF-HOLLAND, Inc., SAF-HOLLAND, HOLLAND, SAF, and logos are trademarks of SAF-HOLLAND S.A., SAF-HOLLAND GmbH, and SAF-HOLLAND, Inc. Page 10 1" MIN. 6 BOLTS EQUALLY SPACED PLATE LENGTH PLUS 2.00" MIN. (40.8 mm) XL-FW482 Rev C · 2016-07-05 · Amendments and Errors Reserved · © SAF-HOLLAND, Inc., SAF-HOLLAND, HOLLAND, SAF, and logos are trademarks of SAF-HOLLAND S.A., SAF-HOLLAND GmbH, and SAF-HOLLAND, Inc. Page 11 XL-FW482 Rev C · 2016-07-05 · Amendments and Errors Reserved · © SAF-HOLLAND, Inc., SAF-HOLLAND, HOLLAND, SAF, and logos are trademarks of SAF-HOLLAND S.A., SAF-HOLLAND GmbH, and SAF-HOLLAND, Inc. Page 12 "General Safety Information" on page 3. XL-FW482 Rev C · 2016-07-05 · Amendments and Errors Reserved · © SAF-HOLLAND, Inc., SAF-HOLLAND, HOLLAND, SAF, and logos are trademarks of SAF-HOLLAND S.A., SAF-HOLLAND GmbH, and SAF-HOLLAND, Inc. Page 13 Check operation of the valve and cylinder XL-FW482 Rev C · 2016-07-05 · Amendments and Errors Reserved · © SAF-HOLLAND, Inc., SAF-HOLLAND, HOLLAND, SAF, and logos are trademarks of SAF-HOLLAND S.A., SAF-HOLLAND GmbH, and SAF-HOLLAND, Inc. DO NOT become tangled. Set the trailer parking brakes. XL-FW482 Rev C · 2016-07-05 · Amendments and Errors Reserved · © SAF-HOLLAND, Inc., SAF-HOLLAND, HOLLAND, SAF, and logos are trademarks of SAF-HOLLAND S.A., SAF-HOLLAND GmbH, and SAF-HOLLAND, Inc. Page 15 SHOWN AND THE NUT AND WASHER WILL BE SNUG AGAINST THE FIFTH WHEEL. XL-FW482 Rev C · 2016-07-05 · Amendments and Errors Reserved · © SAF-HOLLAND, Inc., SAF-HOLLAND, HOLLAND, SAF, and logos are trademarks of SAF-HOLLAND S.A., SAF-HOLLAND GmbH, and SAF-HOLLAND, Inc. XL-FW482 Rev C · 2016-07-05 · Amendments and Errors Reserved · © SAF-HOLLAND, Inc., SAF-HOLLAND, HOLLAND, SAF, and logos are trademarks of SAF-HOLLAND S.A., SAF-HOLLAND GmbH, and SAF-HOLLAND, Inc. Raise the landing gear to the fully retracted position. UNLOCKED (RELEASED) XL-FW482 Rev C · 2016-07-05 · Amendments and Errors Reserved · © SAF-HOLLAND, Inc., SAF-HOLLAND, HOLLAND, SAF, and logos are trademarks of SAF-HOLLAND S.A., SAF-HOLLAND GmbH, and SAF-HOLLAND, Inc. Improper adjustment can cause improper locking of the mechanism. XL-FW482 Rev C · 2016-07-05 · Amendments and Errors Reserved · © SAF-HOLLAND, Inc., SAF-HOLLAND, HOLLAND, SAF, and logos are trademarks of SAF-HOLLAND S.A., SAF-HOLLAND GmbH, and SAF-HOLLAND, Inc. Re-lubricate by applying a light rust-resistant oil to all moving parts. YOKE SPLIT LOCKS XL-FW482 Rev C · 2016-07-05 · Amendments and Errors Reserved · © SAF-HOLLAND, Inc., SAF-HOLLAND, HOLLAND, SAF, and logos are trademarks of SAF-HOLLAND S.A., SAF-HOLLAND GmbH, and SAF-HOLLAND, Inc. XL-FW482 Rev C · 2016-07-05 · Amendments and Errors Reserved · © SAF-HOLLAND, Inc., SAF-HOLLAND, HOLLAND, SAF, and logos are trademarks of SAF-HOLLAND S.A., SAF-HOLLAND GmbH, and SAF-HOLLAND, Inc. Page 21 Notes XL-FW482 Rev C · 2016-07-05 · Amendments and Errors Reserved · © SAF-HOLLAND, Inc., SAF-HOLLAND, HOLLAND, SAF, and logos are trademarks of SAF-HOLLAND S.A., SAF-HOLLAND GmbH, and SAF-HOLLAND, Inc. Page 22 Notes... Page 23 Notes XL-FW482 Rev C · 2016-07-05 · Amendments and Errors Reserved · © SAF-HOLLAND, Inc., SAF-HOLLAND, HOLLAND, SAF, and logos are trademarks of SAF-HOLLAND S.A., SAF-HOLLAND GmbH, and SAF-HOLLAND, Inc. Page 24 From fifth wheel rebuild kits to suspension bushing repair kits, SAF-HOLLAND Original Parts are the same quality components used in the original component assembly. SAF-HOLLAND Original Parts are tested and designed to provide maximum performance and durability. Will-fits, look-alikes or, worse yet, counterfeit parts will only limit the performance potential and could possibly void SAF-HOLLAND's warranty. Page 1 Owner's Manual FW35 Series Fifth Wheel Operation, Maintenance and Troubleshooting Procedures XL-FW10009UM-en-US Rev F... "WARNING" followed by important product information. These terms are defined as follows: XL-FW10009UM-en-US Rev F · 2021-06-16 · Amendments and Errors Reserved · © SAF-HOLLAND, Inc., SAF-HOLLAND, HOLLAND, SAF, and logos are trademarks of SAF-HOLLAND S.A., SAF-HOLLAND GmbH, and SAF-HOLLAND, Inc. XL-FW10009UM-en-US Rev F · 2021-06-16 · Amendments and Errors Reserved · © SAF-HOLLAND, Inc., SAF-HOLLAND, HOLLAND, SAF, and logos are trademarks of SAF-HOLLAND S.A., SAF-HOLLAND GmbH, and SAF-HOLLAND, Inc. Copyright © 2012 · SAF-HOLLAND, Inc. www.safholland.us XL-FW10009UM-en-US Rev F · 2021-06-16 · Amendments and Errors Reserved · © SAF-HOLLAND, Inc., SAF-HOLLAND, HOLLAND, SAF, and logos are trademarks of SAF-HOLLAND S.A., SAF-HOLLAND GmbH, and SAF-HOLLAND, Inc. (Document No. XL-FW10066SG-en-US), under this heading, available on the internet at www.safholland.us. XL-FW10009UM-en-US Rev F · 2021-06-16 · Amendments and Errors Reserved · © SAF-HOLLAND, Inc., SAF-HOLLAND, HOLLAND, SAF, and logos are trademarks of SAF-HOLLAND S.A., SAF-HOLLAND GmbH, and SAF-HOLLAND, Inc. Guide (Document No. XL-FW10066SG-en-US), available on the internet at www.safholland.us. XL-FW10009UM-en-US Rev F · 2021-06-16 · Amendments and Errors Reserved · © SAF-HOLLAND, Inc., SAF-HOLLAND, HOLLAND, SAF, and logos are trademarks of SAF-HOLLAND S.A., SAF-HOLLAND GmbH, and SAF-HOLLAND, Inc. Page 7 If either of the above conditions DO NOT exist, repeat Steps 4-6. XL-FW10009UM-en-US Rev F · 2021-06-16 · Amendments and Errors Reserved · © SAF-HOLLAND, Inc., SAF-HOLLAND, HOLLAND, SAF, and logos are trademarks of SAF-HOLLAND S.A., SAF-HOLLAND GmbH, and SAF-HOLLAND, Inc. IMPORTANT: If the trailer is too high, the kingpin will NOT properly connect with the lock jaws. XL-FW10009UM-en-US Rev F · 2021-06-16 · Amendments and Errors Reserved · © SAF-HOLLAND, Inc., SAF-HOLLAND, HOLLAND, SAF, and logos are trademarks of SAF-HOLLAND S.A., SAF-HOLLAND GmbH, and SAF-HOLLAND, Inc. Page 9 LOCKS COMPLETELY CLOSED AROUND KINGPIN between the lock jaws (Figure 15). XL-FW10009UM-en-US Rev F · 2021-06-16 · Amendments and Errors Reserved · © SAF-HOLLAND, Inc., SAF-HOLLAND, HOLLAND, SAF, and logos are trademarks of SAF-HOLLAND S.A., SAF-HOLLAND GmbH, and SAF-HOLLAND, Inc. Page 10 XL-FW10009UM-en-US Rev F · 2021-06-16 · Amendments and Errors Reserved · © SAF-HOLLAND, Inc., SAF-HOLLAND, HOLLAND, SAF, and logos are trademarks of SAF-HOLLAND S.A., SAF-HOLLAND GmbH, and SAF-HOLLAND, Inc. XL-FW10009UM-en-US Rev F · 2021-06-16 · Amendments and Errors Reserved · © SAF-HOLLAND, Inc., SAF-HOLLAND, HOLLAND, SAF, and logos are trademarks of SAF-HOLLAND S.A., SAF-HOLLAND GmbH, and SAF-HOLLAND, Inc. Place the tractor into neutral and set the tractor and trailer parking brakes. XL-FW10009UM-en-US Rev F · 2021-06-16 · Amendments and Errors Reserved · © SAF-HOLLAND, Inc., SAF-HOLLAND, HOLLAND, SAF, and logos are trademarks of SAF-HOLLAND S.A., SAF-HOLLAND GmbH, and SAF-HOLLAND, Inc. Page 13 LOCK INDICATORS POINT TO UNLOCK SYMBOLS WHEN DISENGAGED SEVERE-DUTY UNLOCKED (DISENGAGED) SLIDERS XL-FW10009UM-en-US Rev F · 2021-06-16 · Amendments and Errors Reserved · © SAF-HOLLAND, Inc., SAF-HOLLAND, HOLLAND, SAF, and logos are trademarks of SAF-HOLLAND S.A., SAF-HOLLAND GmbH, and SAF-HOLLAND, Inc. Page 14 SYMBOLS WHEN ENGAGED RACK PLUNGER LOCKED (ENGAGED) SEVERE-DUTY SLIDERS TRADITIONAL SLIDERS (DISCONTINUED) XL-FW10009UM-en-US Rev F · 2021-06-16 · Amendments and Errors Reserved · © SAF-HOLLAND, Inc., SAF-HOLLAND, HOLLAND, SAF, and logos are trademarks of SAF-HOLLAND S.A., SAF-HOLLAND GmbH, and SAF-HOLLAND, Inc. NOT required for maintenance but may be required when performing repairs. XL-FW10009UM-en-US Rev F · 2021-06-16 · Amendments and Errors Reserved · © SAF-HOLLAND, Inc., SAF-HOLLAND, HOLLAND, SAF, and logos are trademarks of SAF-HOLLAND S.A., SAF-HOLLAND GmbH, and SAF-HOLLAND, Inc. XL-FW10009UM-en-US Rev F · 2021-06-16 · Amendments and Errors Reserved · © SAF-HOLLAND, Inc., SAF-HOLLAND, HOLLAND, SAF, and logos are trademarks of SAF-HOLLAND S.A., SAF-HOLLAND GmbH, and SAF-HOLLAND, Inc. Using a light oil, lubricate the (G) cam pivot point (Figure 35). XL-FW10009UM-en-US Rev F · 2021-06-16 · Amendments and Errors Reserved · © SAF-HOLLAND, Inc., SAF-HOLLAND, HOLLAND, SAF, and logos are trademarks of SAF-HOLLAND S.A., SAF-HOLLAND GmbH, and SAF-HOLLAND, Inc. Page 18 (Figure 39). LOCKING MECHANISM (YOKE TIPS, LOCK PINS AND KINGPIN CONTACT AREA) XL-FW10009UM-en-US Rev F · 2021-06-16 · Amendments and Errors Reserved · © SAF-HOLLAND, Inc., SAF-HOLLAND, HOLLAND, SAF, and logos are trademarks of SAF-HOLLAND S.A., SAF-HOLLAND GmbH, and SAF-HOLLAND, Inc. XL-FW10009UM-en-US Rev F · 2021-06-16 · Amendments and Errors Reserved · © SAF-HOLLAND, Inc., SAF-HOLLAND, HOLLAND, SAF, and logos are trademarks of SAF-HOLLAND S.A., SAF-HOLLAND GmbH, and SAF-HOLLAND, Inc. Back off the adjustment nut five to six (5-6) turns (Figure 46) . XL-FW10009UM-en-US Rev F · 2021-06-16 · Amendments and Errors Reserved · © SAF-HOLLAND, Inc., SAF-HOLLAND, HOLLAND, SAF, and logos are trademarks of SAF-HOLLAND S.A., SAF-HOLLAND GmbH, and SAF-HOLLAND, Inc. Remove the lock tester from the fifth wheel. XL-FW10009UM-en-US Rev F · 2021-06-16 · Amendments and Errors Reserved · © SAF-HOLLAND, Inc., SAF-HOLLAND, HOLLAND, SAF, and logos are trademarks of SAF-HOLLAND S.A., SAF-HOLLAND GmbH, and SAF-HOLLAND, Inc. Page 21 Remove the lock tester from the fifth wheel. XL-FW10009UM-en-US Rev F · 2021-06-16 · Amendments and Errors Reserved · © SAF-HOLLAND, Inc., SAF-HOLLAND, HOLLAND, SAF, and logos are trademarks of SAF-HOLLAND S.A., SAF-HOLLAND GmbH, and SAF-HOLLAND, Inc. (1.5 NOTE: If problems persists, contact SAF-HOLLAND Customer Service at 888-396-6501. XL-FW10009UM-en-US Rev F · 2021-06-16 · Amendments and Errors Reserved · © SAF-HOLLAND, Inc., SAF-HOLLAND, HOLLAND, SAF, and logos are trademarks of SAF-HOLLAND S.A., SAF-HOLLAND GmbH, and SAF-HOLLAND, Inc. THAN 1-1/2" (38.1 mm) cut or otherwise severely damaged. ILS-STYLE CUSHION XL-FW10009UM-en-US Rev F · 2021-06-16 · Amendments and Errors Reserved · © SAF-HOLLAND, Inc., SAF-HOLLAND, HOLLAND, SAF, and logos are trademarks of SAF-HOLLAND S.A., SAF-HOLLAND GmbH, and SAF-HOLLAND, Inc. 24 REPLACE BRACKETS IF 3/8" (9.5 mm) OR LESS (EITHER SIDE) ILS-STYLE BRACKET XL-FW10009UM-en-US Rev F · 2021-06-16 · Amendments and Errors Reserved · © SAF-HOLLAND, Inc., SAF-HOLLAND, HOLLAND, SAF, and logos are trademarks of SAF-HOLLAND S.A., SAF-HOLLAND GmbH, and SAF-HOLLAND, Inc. XL-FW10009UM-en-US Rev F · 2021-06-16 · Amendments and Errors Reserved · © SAF-HOLLAND, Inc., SAF-HOLLAND, HOLLAND, SAF, and logos are trademarks of SAF-HOLLAND S.A., SAF-HOLLAND GmbH, and SAF-HOLLAND, Inc. Refer to HOLLAND Service Bulletin XL-SB004-01 for lube plate warnings. XL-FW10009UM-en-US Rev F · 2021-06-16 · Amendments and Errors Reserved · © SAF-HOLLAND, Inc., SAF-HOLLAND, HOLLAND, SAF, and logos are trademarks of SAF-HOLLAND S.A., SAF-HOLLAND GmbH, and SAF-HOLLAND, Inc. Page 27 Refer to HOLLAND Service Bulletin XL-SB004-01 for lube plate warnings. XL-FW10009UM-en-US Rev F · 2021-06-16 · Amendments and Errors Reserved · © SAF-HOLLAND, Inc., SAF-HOLLAND, HOLLAND, SAF, and logos are trademarks of SAF-HOLLAND S.A., SAF-HOLLAND GmbH, and SAF-HOLLAND, Inc. Page 28 XL-FW10009UM-en-US Rev F · 2021-06-16 · Amendments and Errors Reserved · © SAF-HOLLAND, Inc., SAF-HOLLAND, HOLLAND, SAF, and logos are trademarks of SAF-HOLLAND S.A., SAF-HOLLAND GmbH, and SAF-HOLLAND, Inc. Small Parts Kit (including Lock Adjustment Tag and Hardware) RK-351-12416 Pocket Inserts (Pair) RK-PKT-2 XL-FW10009UM-en-US Rev F · 2021-06-16 · Amendments and Errors Reserved · © SAF-HOLLAND, Inc., SAF-HOLLAND, HOLLAND, SAF, and logos are trademarks of SAF-HOLLAND S.A., SAF-HOLLAND GmbH, and SAF-HOLLAND, Inc. Page 30 Notes XL-FW10009UM-en-US Rev F · 2021-06-16 · Amendments and Errors Reserved · © SAF-HOLLAND, Inc., SAF-HOLLAND, HOLLAND, SAF, and logos are trademarks of SAF-HOLLAND S.A., SAF-HOLLAND GmbH, and SAF-HOLLAND, Inc. Page 31 Notes XL-FW10009UM-en-US Rev F · 2021-06-16 · Amendments and Errors Reserved · © SAF-HOLLAND, Inc., SAF-HOLLAND, HOLLAND, SAF, and logos are trademarks of SAF-HOLLAND S.A., SAF-HOLLAND GmbH, and SAF-HOLLAND, Inc. Page 32 From fifth wheel rebuild kits to suspension bushing repair kits, SAF-HOLLAND Original Parts are the same quality components used in the original component assembly. SAF-HOLLAND Original Parts are tested and designed to provide maximum performance and durability. Will-fits, look-alikes or, worse yet, counterfeit parts will only limit the performance potential and could possibly void SAF-HOLLAND's warranty. Product information