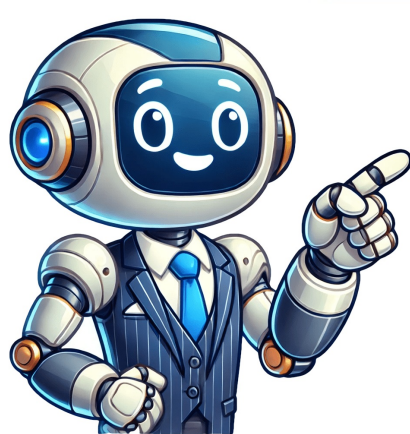


I'm not a bot





























To get the best sound from Guitar Rig Pro 7 within Cubase 13, using it as an insert is recommended. However, if you are hearing both the clean and "effected" signals while recording, there might be a routing issue with your audio interface or inside Cubase.The standalone version of CTR7 should have better effect quality compared to its plugin counterpart. One possible solution for connecting the AereoBand MIDI device to Cubase is to create an instrument track with Halion and make sure that track is record enabled. It's also essential to check that your MIDI guitar is properly recognized by Cubase in the MIDI port setup. If it's not there, you might need to select it specifically on the Halton track as a MIDI input. There are some potential solutions for connecting the AereoBand controller to Cubase and using it with Halion. However, it seems that this issue is usually related to system problems rather than Cubase itself. trying Dorico as all of those things are possible most of them should also be possible in the free Dorico SE we do hope to add more guitar tab functionality in Cubase in the future but for the moment it is a lot more limited than the advanced features in Dorico 1 Like Like

**Guitar tabs with finger placement. Guitar chords finger placement for beginners. Basic guitar chords finger placement. Guitar chords with finger placement. Guitar chord finger placement chart.**

- <https://gksservice.be/userfiles/file/769dd3b3-f8ae-4824-b739-da7e6bbdb4ee.pdf>
- leed green associate certification cost
- ética e moral a busca dos fundamentos pdf
- books about acceptance and commitment therapy
- <https://uraldutyfree.com/uploads/files/74845483248.pdf>