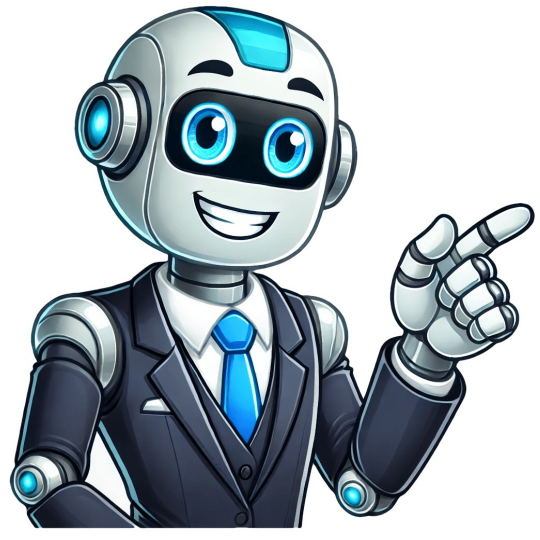


I'm not a bot























## Lg air conditioner troubleshooting guide

1.LG AC Won't Turn On Indicator light OFF means unplugged unit, tripped breaker, faulty outlet or power plug, or blown-up fuse. GREEN light means tripped safety relay and RED indicates resetting control panel or faulty control panel. 2.LG AC Won't Turn Off Dirty condenser coils require cleaning and replacing thermostat, relay board, thermistor, or temperature control board if faulty. 3.LG AC Won't Connect To Wi-Fi Hidden or long-range network requires moving closer to the Wi-Fi, rechecking password, and connecting to correct home network. 4.LG AC Won't Blow Air Slow fan speed requires adjusting fan speed, replacing bent fan blade or broken motor. Replace relay board, thermostat, or control board if faulty. 5.LG AC Won't Drain Clogged drain line or base pan needs unclogging, re-installation of AC if tilted. 6.LG Air Conditioner Not Cooling Restricted airflow means cleaning filter, condenser coils, and vent, removing curtains and barriers around the AC. Ensure correct AC size. 7.LG AC Won't Heat Undersized unit, excessive cold outdoors requires cleaning filter, resetting breaker, and choosing correct heat mode. A faulty remote or sensor can be replaced, as well as the control board if it's defective. If the unit needs resetting due to a tripped breaker, faulty buttons, or a control module, try resetting the AC and breaker, replacing the control panel if necessary. Additionally, replace the control module if faulty and call a technician for electrical issues. 1. \*\*Check temperature control board if other parts are not defective\*\*\*. 2. Ensure the router is visible and within a long range of the air conditioner for seamless Wi-Fi connection. 3. Verify the correct password for Wi-Fi connection, as an incorrect password may prevent it. 4. Issues that may prevent your LG AC from blowing enough air: \* Slow fan speed: Check and adjust the fan speed if necessary. \* Bent or broken motor: Inspect the fan blade and replace if damaged. \* Faulty relay board, thermostat, or control board: Consult an expert for repairs. 5. Good drainage is crucial; check for: \* Clogged drain line: Clean the condensate line to prevent overflow. \* Clogged base pan: Check and clean the base pan for debris accumulation. \* Tilted unit: Ensure proper installation, or re-install if necessary. 6. Issues preventing your LG AC from blowing cold air: \* Restricted airflow (dirty filter coils, vent, or denser barriers): Clean and remove obstructions. \* Room too hot (heat source interference): Move the AC away from heat sources. \* High-temperature setting: Ensure the thermostat is set at a suitable temperature. \* Refrigerant leakage: Consult an expert to fix any leaks. 7. Issues preventing your LG AC from cooling: \* Undersized unit: Check the BTU rating and ensure it matches your room size. If your air conditioner isn't heating properly, check the room size to ensure the unit is sufficient. Excessive outdoor cold can also cause the AC to freeze, requiring you to wait for warmer temperatures. A dirty filter can suffocate the AC, preventing it from blocking hot air, and needs to be cleaned. Additionally, a tripped breaker or wrong mode setting can prevent the AC from heating. For issues with the remote control, check the battery installation and replace them if they're old. Ensure you're operating the remote within a 20-feet radius and inspect the remote sensor for damage. If the problem persists, it could be a faulty control board. To reset the air conditioner, press the power plug's test/reset/power button or the reset button on the control panel. If the control panel still doesn't work after resetting, check for tripped breakers, faulty buttons, or a defective control module. An electrical fault can also prevent the control panel from working. If the heat mode isn't working, it may be due to the wrong mode being selected, such as Cool Mode, Energy-Saver Mode, Fan Mode, or Dry Mode, which need to be deactivated. Lastly, if the compressor won't run consistently, it could be because the AC is overheating, requiring you to shut it down. In cases where the control panel doesn't respond after resetting, consider checking for electrical faults or having an expert inspect and replace the control module or buttons if necessary. Regular maintenance, such as cleaning the filter and ensuring proper battery installation, can help prevent these issues. LG Air Conditioner Troubleshooting Guide To diagnose and fix common issues with your LG air conditioner, start by checking if it's overheating and dirty condenser coils, faulty overload, thermostat, or temperature control board. For dead compressors, replace them with a new one. Check error codes on the manual to determine the fault code meaning, seriousness, and how to clear it. LG air conditioners are great for keeping homes cool during hot summer months but they're not immune to problems. The most common issue is inadequate cooling or poor performance. A dirty or clogged air filter is often the culprit as it restricts airflow, making the AC work harder and reducing its efficiency. Another problem is refrigerant leaks which can lead to reduced cooling capacity and even complete system failure. If you suspect a leak, it's best to call a professional technician for help. Regular maintenance and prompt attention to these issues can keep your LG air conditioner working efficiently. When an issue arises with your LG air conditioner, it may display error codes that can be decoded as follows: E1 or CH01 indicates a problem with the air filter which should be cleaned or replaced; E2 or CH02 suggests an issue with the temperature sensor which might need to be replaced; E3 or CH03 means there's a problem with the outdoor fan motor which could be obstructed or faulty. E4 or CH04 typically relates to a problem with the indoor fan motor while E5 or CH05 indicates a communication error between the units. By understanding these codes, you can quickly diagnose and address common issues with your LG air conditioner. Regular maintenance is key to keeping your LG air conditioner in top condition. This includes changing or cleaning filters regularly to ensure good airflow and prevent dust buildup. Regular maintenance is key to keepin your LG air con workin efficientlly and long-lastingly. Clean or replace filters every 1-2 months to ensure better air quality and cooling efficiency. Don't forget to clean the coils too, especially the evaporator and condenser ones, which can get clogged with dirt and grime. Check if there are any loose wires or connections that might be affectin the AC's functionality. Also, make sure the outdoor unit is clear of leaves and debris to prevent airflow obstructions. It's also impotant to check the refrigerant levels and have a professional top them up if needed. Schedule annual maintenance visits with a certified technician who can perform a thorough inspection and tune-up. They can catch potential issues before they become major problems, savin you money on energy bills and ensuring your AC is always ready to provide you with a cool and comfy indoor environment. Hiring a professional technician is often the best choice when troubleshootin your LG air con. They are trained to handle electrical components and refrigerants safely, and can accurately diagnose complex issues. Professionals ensure that your AC is repaired correctly, promotin its efficiency and extendin its lifespan, while also preserving your warranty and adherin to local regulations. If you're struggling to troubleshoot your LG air conditioner, don't hesitate to seek expert help. To keep your unit running optimally, follow this guide and consult the manual or a professional when needed. This advice is for informational purposes only, and regulations vary by state, so be sure to check with local authorities or an industry expert before proceeding. LG air conditioners are widely used due to their reliable build quality and smart features. However, issues can arise over time, regardless of the brand. If you're experiencing problems with your LG air conditioner, continue reading for solutions to common issues. Here are 7 typical problems with LG air conditioners and their fixes. One common issue is when the air conditioner stops cooling. This could be due to a clogged air filter or faulty thermostat. Check if the thermostat is set to "heat" by mistake and adjust it to "cool." Also, ensure the thermostat is at the correct temperature and replace batteries if necessary. A dirty air filter can cause issues, so change it every 30-60 days, depending on your environment and filter type. Set a monthly reminder to check the filter's condition. Another issue is when the air conditioner won't turn on. This might be due to a power failure or tripped circuit. Check the main power cable and circuit breaker switch to ensure they are secure. If you're still having trouble, try resetting the unit or checking for loose connections. By following these tips and seeking help when needed, you can keep your LG air conditioner running smoothly and stay cool during the summer months. Remember to always consult local authorities or an industry professional before proceeding with any work, as regulations differ from state to state. If your LG Air Conditioner isn't working properly, first check if it's getting power. If the electricity supply seems fine, then the issue might be inside the unit itself. Perhaps some wires are damaged and not allowing current to flow. In that case, you'll need a professional Appliance Repair Technician to fix the problem. You can connect with one through our chatbox service - no in-home visits or appointments required. LG Air Conditioners blowing hot air are usually due to an incorrect thermostat setting or compressor issue. To troubleshoot, check if your thermostat is set to "cool" or "auto" instead of "on". If that's the case, just change the setting and you're good to go. However, if the thermostat settings seem fine, the problem might be with the compressor. You can test it by turning off the AC for 30 seconds and listening for the compressor to start up again. If it doesn't kick in after a few minutes, you'll need to replace it or call in an expert. If your LG Air Conditioner is working at temperatures that don't match your settings, it could be due to a faulty thermostat. This is a pretty common issue and can be resolved by replacing the thermostat - but that's a job best left to a professional. Alternatively, if you've checked the thermostat and it seems to be working fine, there might be a refrigerant leak causing the problem. In this case, it's best to call in an Appliance Repair Technician. Lastly, if your LG Air Conditioner is leaking water excessively, it could be due to a dirty air filter or blocked pipe. This issue can usually be resolved by simply cleaning or replacing the air filter - but if the leak persists, you may need to call in a professional to diagnose and fix the problem. Dirty Air Filter - Fix: A dirty air filter can cause coils inside the Air Conditioner to freeze, leading to water leakage. Fix: Clean the air filter thoroughly. Blocked Drain Pipe - Fix: If the drain pipe becomes clogged, water leaks elsewhere. Fix: Check and remove blockages from the drain line. Appliance Repair Technician - Connect with a professional for assistance. LG Air Conditioner Unresponsive Remote Control - Fix: Possible cause: Low batteries or main control board problems. Fix: Replace batteries or replace the main control board. LG Air Conditioner Weak Airflow - Fix: Possible causes: Obstruction, dirt in vents or filters. Fix: Clean vents and filters. Check for obstructions between fan blades and tighten fan axle if loose. Consider replacing fan motor. LG Air Conditioner Making Noise - Fix: Causes of noise vary. Fix: Inspect the unit and address the issue. Typically, LG Air Conditioner noise issues stem from dirt or debris trapped inside, a common problem that can be resolved by clearing out stuck particles in fans, filters, and other areas, significantly reducing the noise level. In some cases, worn-out ball bearings within fan motors may also cause noise, requiring replacement either by the motor itself or its internal bearings, often best handled by an Appliance Repair Technician. On rare occasions, unpleasant smells from LG Air Conditioners can be caused by mold or refrigerant leaks. A leak is indicated if the mini-split emits a fishy, vinegar-like, or sweet smell, accompanied by a lack of chilled air. If you encounter this issue, consider contacting professionals for assistance with mold removal and component repairs. Generally, LG Air Conditioners last between 10 to 15 years, depending on usage, and maintaining good condition can add extra years to their lifespan. Reviews from satisfied customers praise the ease of use and reliability of LG Air Conditioners, especially when choosing models based on room size. LG air conditioner provides a cool living space after multiple uses with a timer, which is a convenient feature to set and forget, as it maintains a comfortable temperature without any hassle. It operates effectively even with the economy setting on its open-plan first floor area. Although some users have experienced difficulties in using the remote control feature via their smartphones, the company plans to assist customers through its grandkids.