

**VEDAT ABLAY SHIP PARTICULARS**  
**VEDAT ABLAY GÄMISI HAKYNYDA MAGLUMATLAR**  
**СУДОВЫЕ ХАРАКТЕРИСТИКИ СУДНА VEDAT ABLAY**

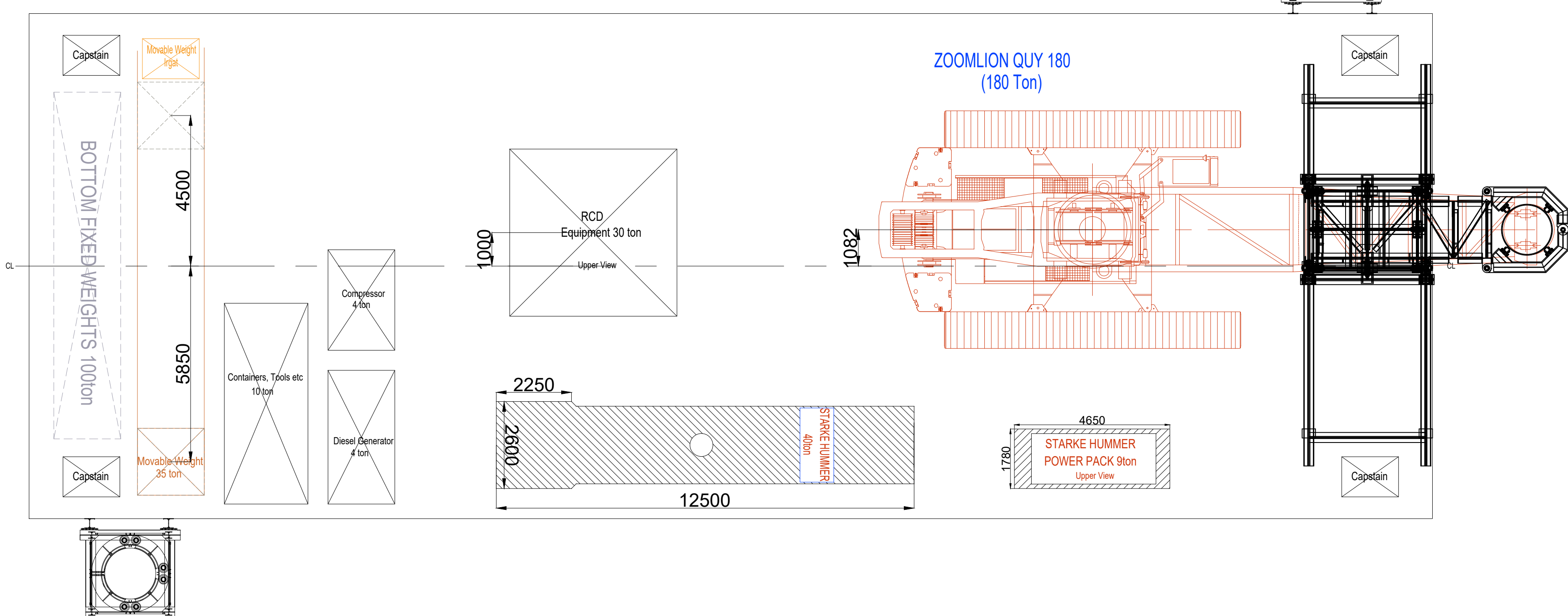
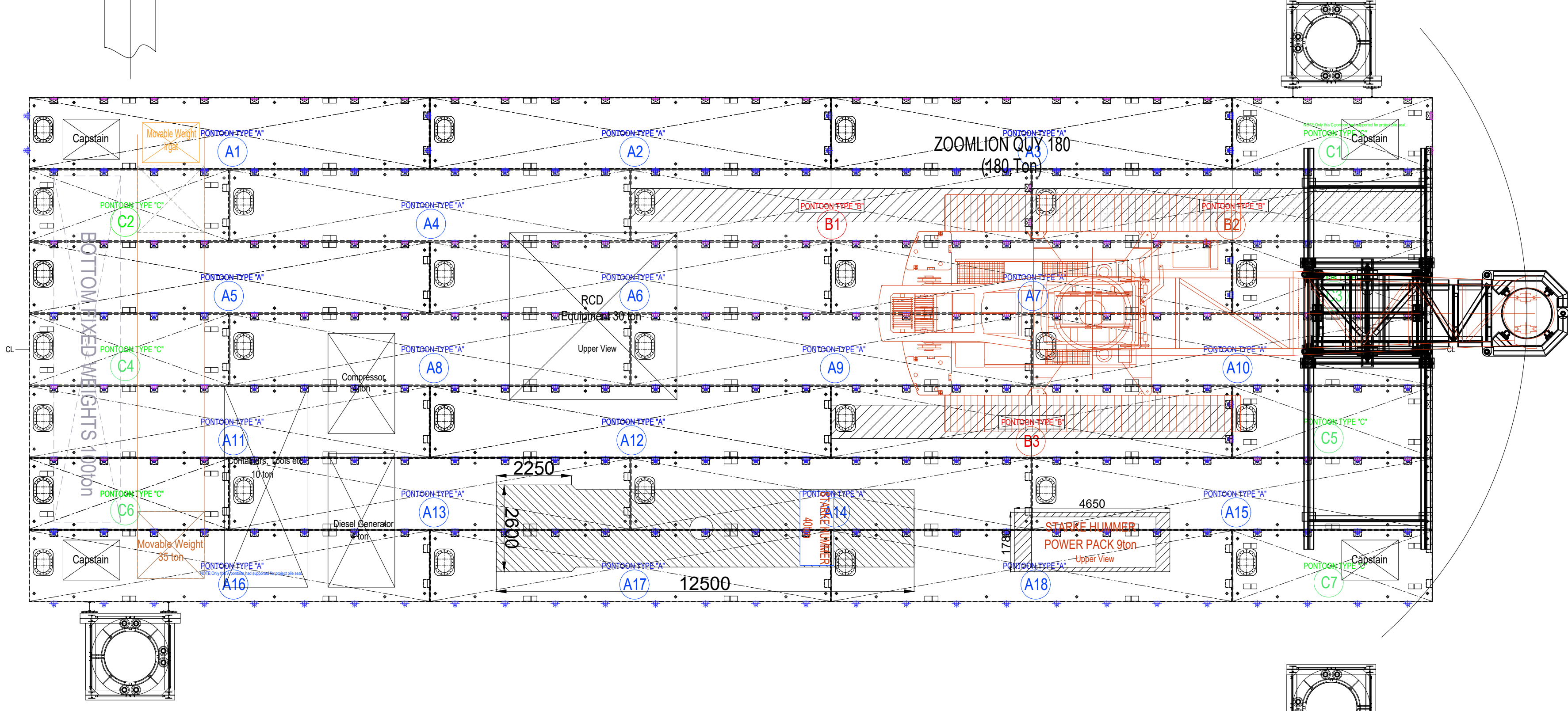
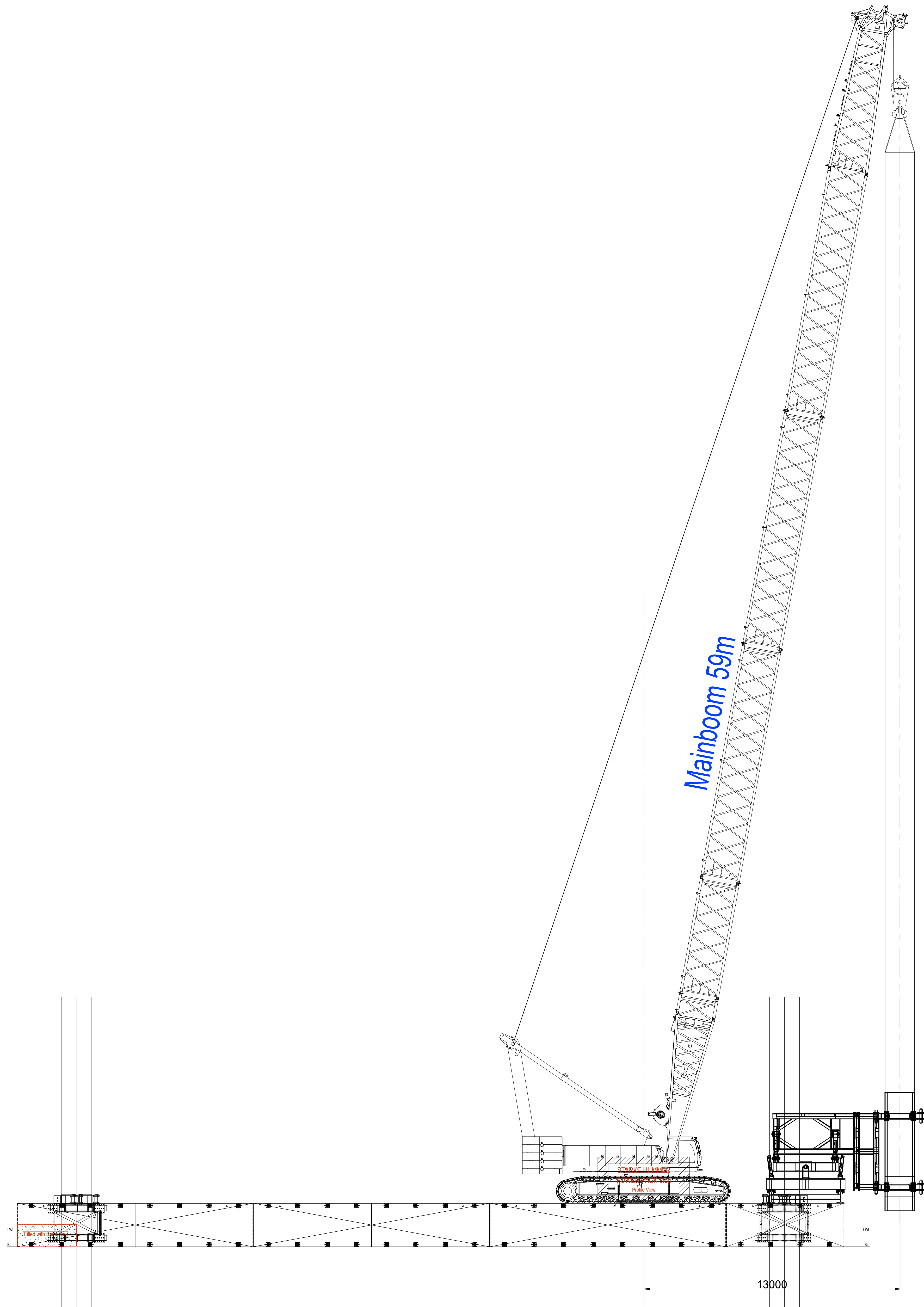


<b>Name of Ship/Gäminiň ady/Название судна:</b>	Vedat Ablay
<b>Owner/Gämä eýelik edýän/Судовладелец:</b>	Ilk İnşaat Taahhüt Sanayi ve Tic. A.Ş.
<b>Type of Ship/Gäminiň görnüşi/Тип судна:</b>	Modular Pontoon/Modul Panton
<b>Year and Place of Build/Gurlan ýuly we ýeri</b>	2021/ Turkey
<b>Год и место постройки:</b>	
<b>IMO number/HDG belgisi/ Номер ИМО:</b>	-
<b>Call Sign/Çagyryş signaly/Позывной:</b>	-
<b>Port of Registry/Bellige alnan porty/Порт приписки:</b>	-
<b>Number of crew/Екипаž sany/ Количество экипажа:</b>	-
<b>Length over all/Umumy uzynlygy/Общая длина:</b>	41.980m
<b>Design water line/Suw liniýasunyň dizaýny</b>	41.980m
<b>Проектная линия водопровода:</b>	
<b>Length between perpendicular/Perpendikulýar aralygyň uzynlygy/Длина между перпендикулярами</b>	41.980m
<b>Breadth (hull)/Ini (gabara)/ Ширина (корпус):</b>	15.066m
<b>Breadth (max)/Ini (maks.)/ Ширина (макс.):</b>	15.260m
<b>Breadth(max with pile seat)/Ini(maks.pile seat bilen)/</b>	20.982m
<b>Ширина (макс с pile seat ):</b>	
<b>Depth/Bortunyň beýikligi/Глубина:</b>	2.200m
<b>Draught (operating)/Suwa batyş derejesi (işjeň ýagdaýynda)/Осадка (рабочая):</b>	1.051m
<b>Displacement (density 1250t/m<sup>3</sup>)/Suwa sygyş agramy(dukyzlygy 1250 t/m<sup>3</sup>)</b>	838.1 ton
<b>Водоизмещение (плотность 1250т/м3):</b>	



Turkmenistan Branch : Shors Street No.43  
Ashgabat, Turkmenistan Tel - Fax : +99 (312) 760316 – 17

<b>A type Pontoon deck load</b> <b>A görnüşli pantonyň palubasynyň ýük göterijiligi</b> <b>Палубная нагрузка понтона типа А:</b>	10.0 ton/m <sup>2</sup>
<b>B type Pontoon deck load</b> <b>B görnüşli pantonyň palubasynyň ýük göterijiligi</b> <b>Палубная нагрузка понтона типа Б:</b>	70.0 ton/m <sup>2</sup>
<b>C type Pontoon deck load</b> <b>Ç görnüşli pantonyň palubasynyň ýük göterijiligi</b> <b>Палубная нагрузка понтона типа В:</b>	11.5 ton/m <sup>2</sup>



ANA BOYUTLAR  
(Principal Dimensions)

LENGTH OVER ALL	41 980 m
DESIGN WATER LINE	41 980 m
LENGTH BETWEEN PERP.	41 980 m
BREADTH (hull)	15 066 m
BREADTH (max)	15 260 m
BREADTH (max with pile seat)	20 982 m
DEPTH	2 200 m
DRAUGHT (operating)	1 051 m
DISPLACEMENT	838 1 ton
WINCH MODEL	ZOOMLION QUY 180

A TYPE PONTOON DECK LOAD	10.0 ton/m <sup>2</sup>
B TYPE PONTOON DECK LOAD	70.0 ton/m <sup>2</sup>
C TYPE PONTOON DECK LOAD	11.5 ton/m <sup>2</sup>

ZOOMLION QUY 180		Main Crane
180 Ton		
LIFTING CONFIGURATION		H
BOOM LENGTH	(m)	59
RADIUS	(m)	13
COUNTERWEIGHT	(T)	
SUPERLIFT COUNTERWEIGHT	(T)	
MAX. LOAD CAPACITY	(T)	56.9
LOAD WEIGHT	(T)	49
LIFTING EQUIPMENT WEIGHT	(T)	3
TOTAL WEIGHT	(T)	52
CHART CAPACITY	(%)	91

1	Vinc modelle uygun yerleşim planı yapıldı.	16.06.2021	NEŞAT KARAEER	DENİZ ÇORBACI
NO	REVIZYON NOTU	TARİH	DÜZELTEN	KONTROL EDEN
NO	REVISION NOTE	DATE	REVISED BY	CHECKED BY

<b>delphina design</b>		PROJE ADI PROJECT NAME	GENEL PLAN GENERAL ARRANGEMENT PLAN
DELPHINA GEMİ MÜHENDİSLİK VE İNŞAAT TİC. LTD. ŞTİ. ANKARA CAD. POLAT İS. MERKEZİ NO:106 KAT:3 D:44 KARTAL,İSTANBUL/TÜRKİYE E-mail: info@delphina.com.tr Phone: +90 216 464 02 36		GEMİ ADI SHIP NAME	MODULAR PONTOON
GEMİ TİPİ SHIP TYPE		GEMİ SAHİBİ SHIP OWNER	İLK İNŞAAT TAAHÜT SAN. VE TİC. A.Ş.
RESİM NO DRAWING NO		DİZAYN DESIGNED BY	*****
İMO NUMARASI IMO NO		CAD DRAWN BY	NEŞAT KARAEER
KİLAS CLASS		KONTROL CHECKED BY	DENİZ ÇORBACI
TARİH DATE			
ÖLÇEK SCALE			