

**TANSEL ÖZEL PARTICULARS**  
**TANSEL ÖZEL GÄMİSİ HAKYND A MAGLUMATLAR**  
**СУДОВЫЕ ХАРАКТЕРИСТИКИ СУДНА TANSEL ÖZEL**



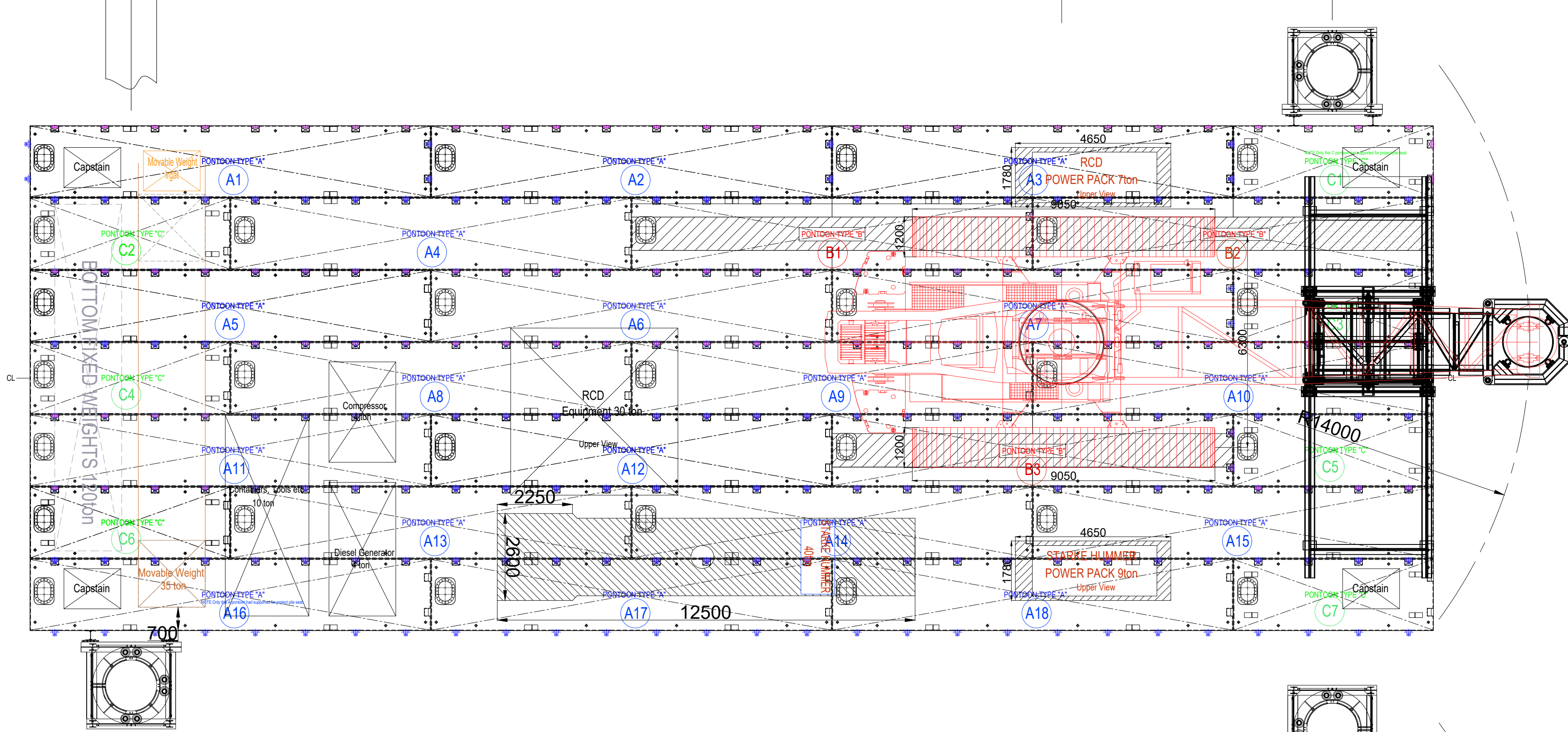
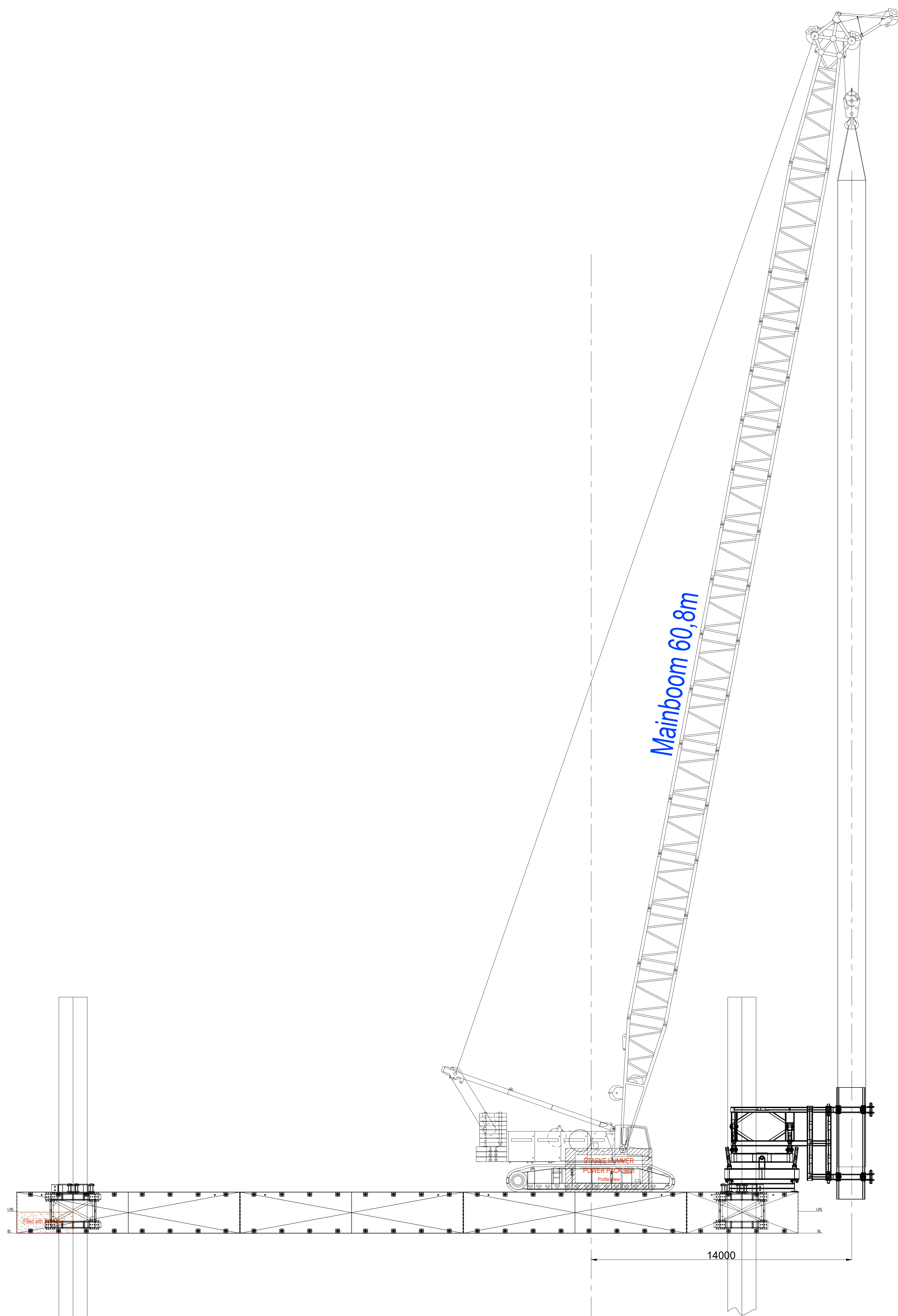
<b>Name of Ship/Gäminiň ady/Название судна:</b>	Tansel Özel
<b>Owner/Gämä eýelik edýän/Судовладелец:</b>	Ilk İnşaat Taahhüt Sanayi ve Tic. A.Ş.
<b>Type of Ship/Gäminiň görnüşi/Тип судна:</b>	Modular Pontoon/Modul Panton
<b>Year and Place of Build/Gurlan ýuly we ýeri</b> <b>Год и место постройки:</b>	2021/ Turkey
<b>IMO number/HDG belgisi/ Номер ИМО:</b>	-
<b>Call Sign/Çagyryş signaly/Позывной:</b>	-
<b>Port of Registry/Bellige alnan porty/Порт приписки:</b>	-
<b>Number of crew/Екипаž sany/ Количество экипажа:</b>	-
<b>Length over all/Umumy uzynlygy/Общая длина:</b>	41.980m
<b>Design water line/Suw liniýasynyň dizaýny</b> <b>Проектная линия водопровода:</b>	41.980m
<b>Length between perpendicular/Perpendikulýar aralygyň uzynlygy/Длина между перпендикулярами</b>	41.980m
<b>Breadth (hull)/Ini (gabara)/ Ширина (корпус):</b>	15.066m
<b>Breadth (max)/Ini (maks.)/ Ширина (макс.):</b>	15.260m
<b>Breadth(max with pile seat)/Ini(maks.pile seat bilen)/</b> <b>Ширина (макс с pile seat ):</b>	20.982m
<b>Depth/Bortunyň beýikligi/Глубина:</b>	2.200m
<b>Draught (operating)/Suwa batyş derejesi (işjeň ýagdaýynda)/Осадка (рабочая):</b>	1.171m
<b>Displacement (density 1250t/m<sup>3</sup>)/Suwa syguş agramy(dykyzlygy 1250 t/m<sup>3</sup>)</b> <b>Водоизмещение (плотность 1250т/м3):</b>	838.1 ton
<b>A type Pontoon deck load</b> <b>A görnüşli pantonyň palubasynyň ýük göterijiligi</b> <b>Палубная нагрузка понтона типа А:</b>	10.0 ton/m <sup>2</sup>



Turkmenistan Branch : Shors Street No.43  
Ashgabat, Turkmenistan Tel - Fax : +99 (312) 760316 – 17

<b>B type Pontoon deck load</b> <b>B görnüşli pantonyň palubasynyň ýük göterijiligi</b> <b>Палубная нагрузка понтона типа Б:</b>	70.0 ton/m <sup>2</sup>
<b>C type Pontoon deck load</b> <b>Ç görnüşli pantonyň palubasynyň ýük göterijiligi</b> <b>Палубная нагрузка понтона типа В:</b>	11.5 ton/m <sup>2</sup>



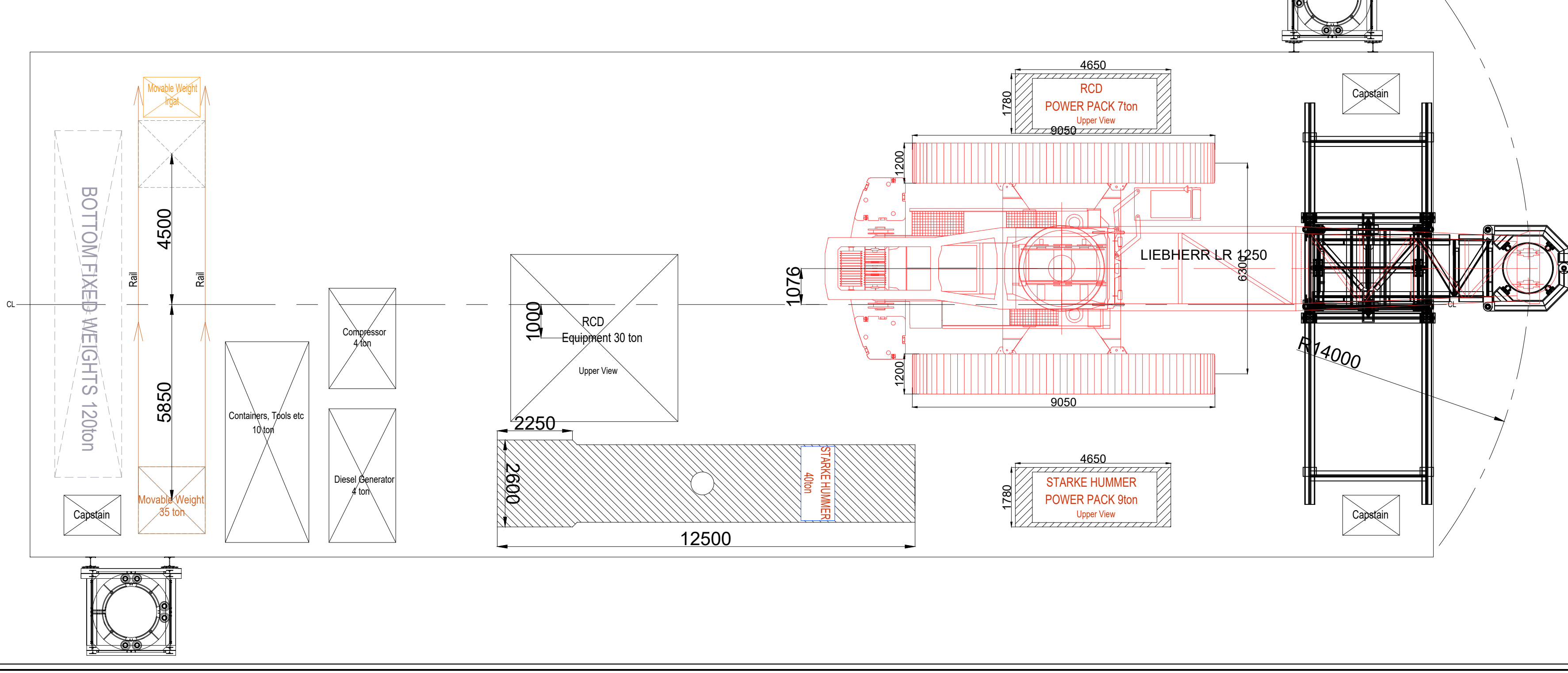


ANA BOYUTLAR  
(Principal Dimensions)

LENGTH OVER ALL	41.980 m
DESIGN WATER LINE	41.980 m
LENGTH BETWEEN PERP.	41.980 m
BREADTH (hull)	15.056 m
BREADTH (max)	15.260 m
BREADTH (max with pile seat)	20.982 m
DEPTH	2.200 m
DRAUGHT (operating)	1.171 m
DISPLACEMENT	933.10 ton
WINCH MODEL	LIEBHERR LR 1250

A TYPE PONTOON DECK LOAD	10.0 ton/m <sup>2</sup>
B TYPE PONTOON DECK LOAD	70.0 ton/m <sup>2</sup>
C TYPE PONTOON DECK LOAD	11.5 ton/m <sup>2</sup>

LIEBHERR LR 1250 250 Ton		Main Crane
LIFTING CONFIGURATION	SH	
BOOM LENGTH	m	60,8
RADIUS	m	14
COUNTERWEIGHT	Te	75,5+27
SUPERLIFT COUNTERWEIGHT	Te	0
MAX LOAD CAPACITY	Te	58,8
LOAD WEIGHT	Te	49
LIFTING EQUIPMENT WEIGHT	Te	3
TOTAL WEIGHT	Te	52
CHART CAPACITY	%	91



1	Vinç modeline uygun yerleşim planı yapıldı.	16.08.2021	NEŞAT KARAEER	DENİZ ÇORBACI
NO	REVİZYON NOTU	TARİH	DÜZELTEN	KONTROL EDEN
NO	REVİZYON NOTU	DATE	REVISED BY	CHECKED BY

		PROJE ADI PROJECT NAME	GENEL PLAN GENERAL ARRANGEMENT PLAN
DEĞİŞİM GEMİ MÜHENDİSLİK VE İNŞAAT TÜRZEM TİC. LTD. ŞTİ. ANKARA CAD. POLAT İS MİMARLIK NO:108 KAT:3 D:44 KARTALTAŞ/İSTANBUL/TÜRKİYE E-posta: info@delphina.com.tr Phone: +90 212 464 02 38		GEMİ ADI SHIP NAME	MODULAR PONTOON
GEMİ TİPİ SHIP TYPE		GEMİ SAHİBİ SHIP OWNER	İLK İNŞAAT TAAHÜT SAN. VE TİC. A.Ş.
RESİM NO DRAWING NO		DİZAYN DESIGNED BY	*****
NO:108 KAT:3 D:44 KARTALTAŞ/İSTANBUL/TÜRKİYE E-posta: info@delphina.com.tr Phone: +90 212 464 02 38		CAD DRAWN BY	NEŞAT KARAEER
KİLAS CLASS		TARİH DATE	KONTROL CHECKED BY
11/100		01.11.2021	DENİZ ÇORBACI
11/100			