



ILK CILAVUZ - VESSEL SPECIFICATIONS



Name of Vessel

ILK Cilavuz

Port of Registry / Flag

Turkmenbashi / Turkmenistan

Year of Delivery

2006

Type

5150 Anchor Handling/Supply Vessel (DPS1)

Classification

American Bureau of Shipping

Length over all (LOA) 59.25m

Breadth (Moulded) 14.95m

Depth (Moulded) 6.10m

Draft (Max) 5.00m

Draft (Design) 4.95m

GRT / NRT

16771 / 503T

Speed (Max) / Consumption

12.5 knots / 16m³ (24 hrs)

Service Speed / Consumption

10 knots / 13.5m³ (24 hrs)

Economical Speed / Consumption

9 knots / 12m³ (24 hrs)

Bollard Pull 64 MT

Accommodation

All cabins fully air-conditioned & c/w attached washroom

Berths 42

Cargo Capacities

Deck Cargo 550 mt

Deck Strength 7.0 mt/m² uniform loading

Clear Deck Area - 360m²

Drill Water - 263m³

Fresh Water - 360m³

Fuel Oil - 483m³ @ 90%

Sewage - 122m³ @ 90%

Liquid Mud - 333m³ @ 90%

Dry Bulk - 168m³ @ 90%

Freezer/Chiller - 10m³ /10m³

Pumps

Fuel Oil

1 x 150m³/hr @ 75m head; Azcue

Fresh Water

1 x 125m³/hr @ 75m head; Azcue

SWB/Drill Water

1 x 100m³/hr @ 75m head; Azcue

Liquid Mud

2 x 70m³/hr @ 85m head; Mission Magnum

Circulation System, plus tank agitation system

Bulk Cement

2 x 13m³/min @ 80 psi air compressors;

Airman system fitted with dryers

Propulsion System

Main Engines

2 x 1920kw (2575 bhp) @ 1600rpm Caterpillar 3516B

Main Generators

3 x 340kw @ 1500rpm Caterpillar 340B c/w Leroy Somer LSAM47.1L9 rated at 320 kw/415 V/3 Ph/50 Hz

Emergency Generator

1 x 52kw @ 1500 rpm Olympian GEP 65-3 rated at 415 V/ 3Ph/50 Hz

Bow Thruster

1 x 350 kw electric-driven Kawasaki KT-55B3 tunnel type (CPP); 5T thrust

Deck Equipment

Anchor Windlass

1 x electro-hydraulic Mentrade HAW-10T

Bow Anchors

2 x 1305 kg HHP anchors

Capstans

2 x 5 mt @ 15m/min electro-hydraulic; Mentrade HVC-5T

Tugger Winch

2 x 10 mt @ 15m/min electro-hydraulic; Mentrade HUW-10T

Drum Capacity: 200m (L) x 22m (Ø) SWR

Deck Crane

1 x 5T

Towing/AHT Winch

1 x electro-hydraulic double drum Mentrade AHTW-150T

Upper Drum Cap (Tow)

1000m (L) x 56mm (Ø) SWR

Lower Drum Cap (AH)

1000m (L) x 56mm (Ø) SWR

Line Pull

150mt @ 6m/min at 1st layer

71mt @ 12m/min at 1st layer

50mt @ 18m/min at 1st layer

23mt @ 36m/min at 1st layer

Shark Jaws

1 set electro-hydraulic Kamfork; SWL 300mt

Tow Pins

2 x electro-hydraulic with turntable top flaps

Rope Reel

1 x electro-hydraulic Mentrade HSR-5T

Drum Capacity: 1000mm (L) x 56 mm (Ø) SWR

Reefer Points 4 x 4pin x 40A & 2 x 4pin x 32A

Radio and Navigation Equipment

GMDSS Furuno RC-1800T (Area 3) comprising:

SSB: 1 x Furuno FS-2570 with built in DSC

Inmarsat C: Furuno Felcome 15 & Felcom 15SSAS

VHF Radio: 2 x Furuno FM 8500 with built-in DSC

Navtex Receiver: 1 x Furuno NX 700 (518 KHz)

SART: 2 x McMurdo S4 (9 GHz)

EPIRB: 1 x McMurdo E3A

Portable VHF Radios: 3 x McMurdo R2 (25KHz)

Radar

1 Furuno FR 2115 (X Band)

1 Furuno FR 1510 MK3

Echo Sounder 1 Furuno FE 700

GPS 1 x Furuno GP 90

Gyrocompass 1 x Anschuetz Standard 22

Autopilot 1 x Anshuetz Nautopilot NP60

Magnetic Compass 1 x Cassens & Plath

Reflecta 3

Weather Fax 1 x Furuno FAX 207

Speed Log 1 x Furuno DS-80

Wind Indicator 1 x RM Young 05103

AIS 1 x Furuno FA-100

DP Marine Technology Bridge Mate DP1

2 x DGPS Veripos LD2S

Joystick C-Joy SJSO1 Kongsberg

Vessel also fitted with Vingtor Talkback System & Self-powered Telephones

Fire Fighting & Anti-Pollution Equipment

EXTERNAL

FiFi System

Class 1 with water curtain all round

Fire Pump

2 x 1550m³/hr @ 13 bar, Unitor SFP250x350 driven by front PTO of M/E

Monitors

- (water/foam)

1 x 300-1200m³/hr, Unitor FFS1200-300

- (water)

1 x 1200 m³/hr, Unitor FFS1200LP

Throw length / height: 120m / 45m

Oil Dispersant System

300m Heavy Duty Oil Spill Booms

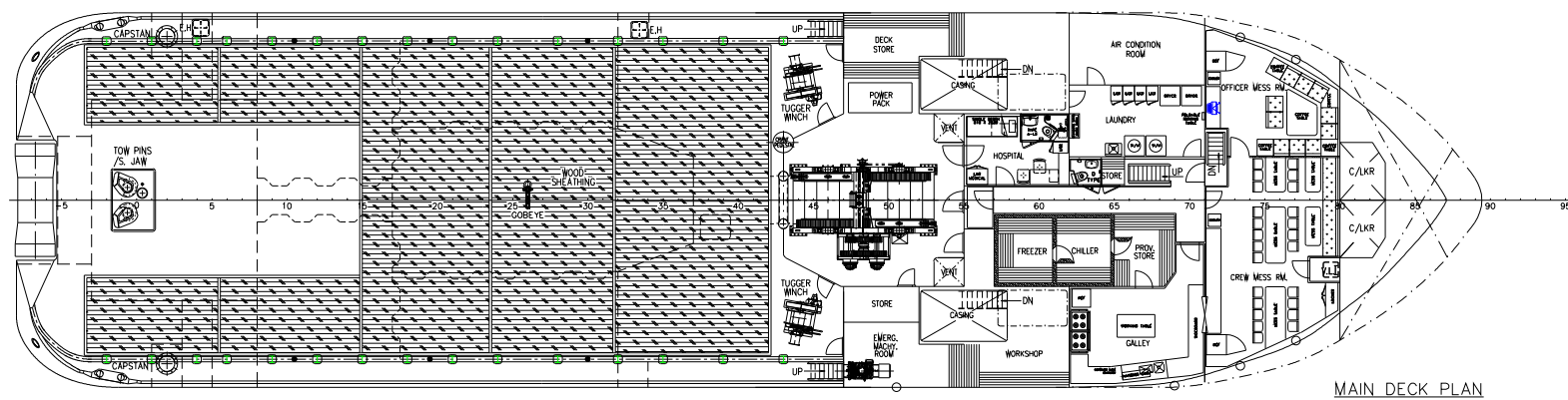
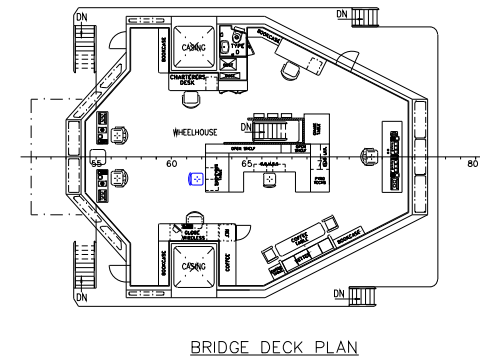
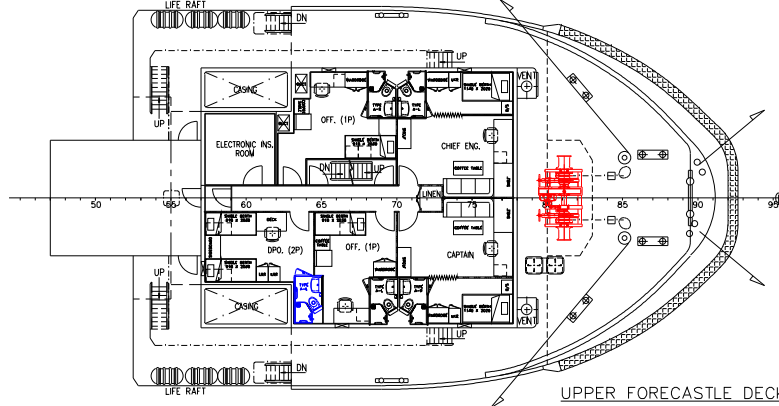
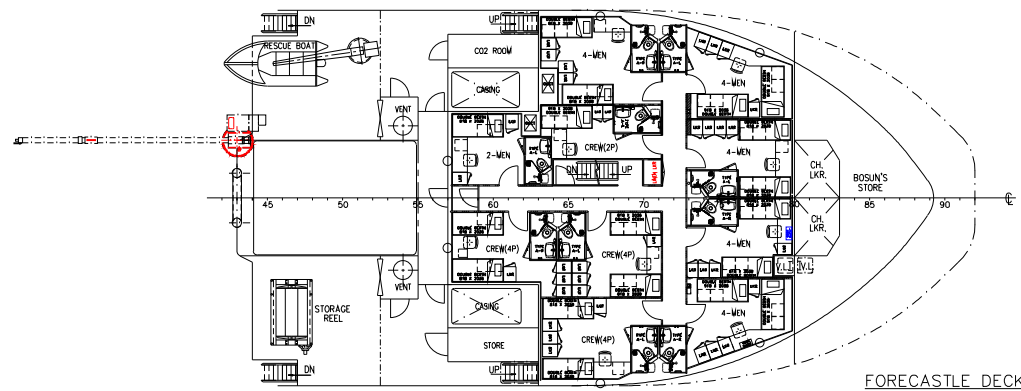
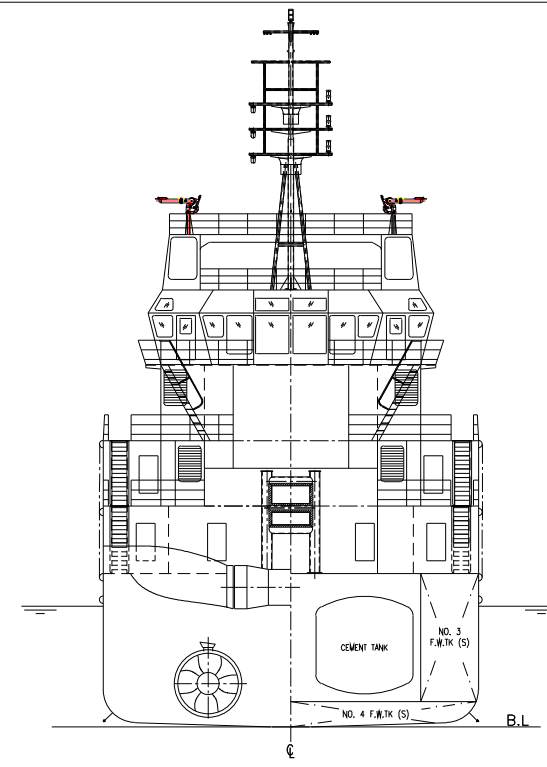
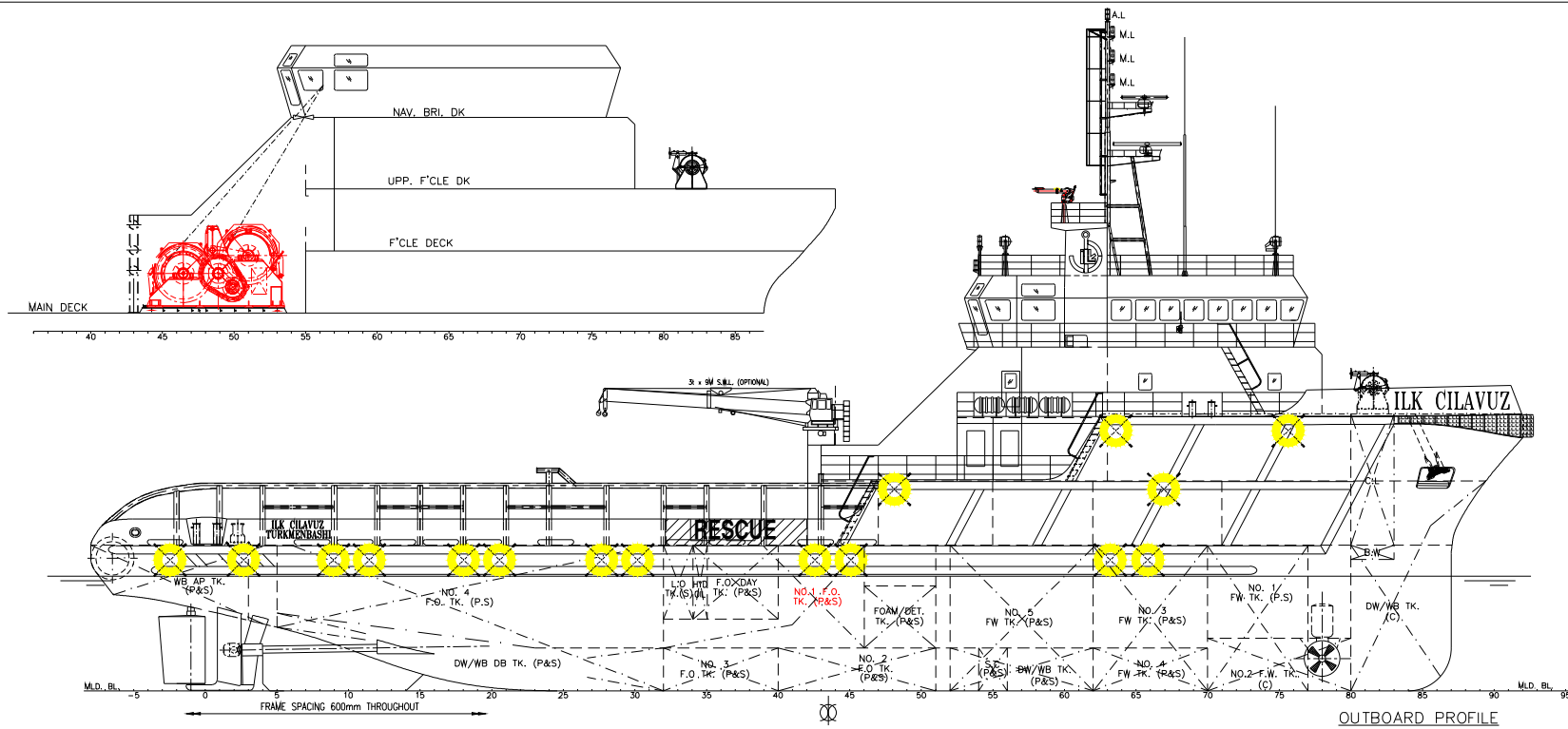
Safety and Environment

Liferafts

6 x 25 men SOLAS approved type

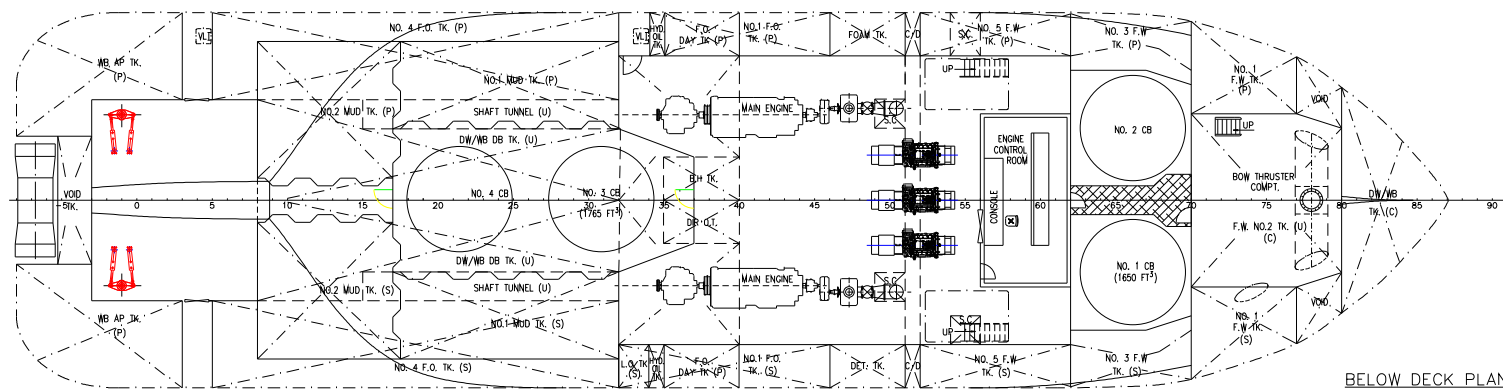
Rescue Boat

1 x 9 man FRC



PRINCIPAL DIMENSIONS

LENGTH (O.A.)	59.250 M
LENGTH (W.L.)	56.000 M
LENGTH (B.P.)	52.200 M
BEAM (MLD.)	14.950 M
DEPTH (MLD.)	6.100 M
DESIGN DRAFT	4.950 M
TOTAL DWT AT 4.95M	1400 TONS
FUEL OIL	540 M ³
FRESH WATER	360 M ³
DRILL WATER / W.B.	400 M ³
MUD	370 M ³
CLEAR DECK AREA	350 M ²
DECK CARGO (DECK LOADING = 7.5T/M ²)	500 TONS
DRY BULK TANKS (4x1650 FT ³)	187 M ³
MAIN PROPULSION ENGINE	2 X 2575 BHP
SPEED (TRIALS)	13.0 KNOTS
BOLLARD PULL	64 TONS
COMPLEMENT	42 MEN
CLASS & NOTATION : BV * A1 © "OFFSHORE SUPPORT & FIRE FIGHTING VESSEL CLASS 1" + AMS	



OWNER				
ILK INŞAAT ILK CONSTRUCTION CO. TAAHHÜT SAN. ve TİC. A.Ş.				
VESSEL NAME				
ILK CILAVUZ				
TITLE				
GENERAL ARRANGEMENT PLAN				
CLASSIFICATION		BUREAU VERITAS	HULL NO. H852	
DRAWN	CHECKED	SCALE	DRAWING NUMBER	REV.
		1:150	KCM/Q331(A)-G1	