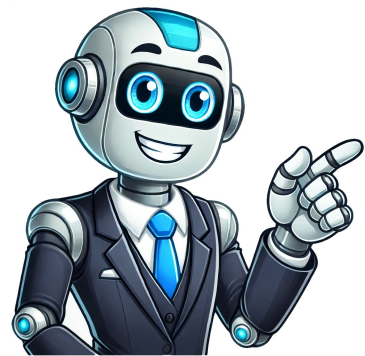


I'm not a robot



Spanish regents exam

Last Updated: The New York State Education Department no longer produces Checkpoint A and B examinations in world languages. These exams are now developed at the local level by schools, districts, and consortia. For past examinations from 2002-2011, visit the links below. While these may be used for practice with students, they should not be used on final exams to earn diploma credit. Former LOTE Checkpoint A Second Language Proficiency (SLP) Examination Archive Former LOTE Checkpoint B Comprehensive Regents Examination Archive For frequently asked questions regarding assessments, please consult the LOTE FAQ. Note that this document is being revised in 2021 to add new questions and will be posted on this site once available. Exam Schedule: The Checkpoint A and B exams are locally administered, so districts may choose their date. NYSED suggests June 2022 for these exams. 4+1 Pathway Exams in World Languages: These special exams, available in 14 languages, can fulfill the world language exam requirement of the Regents Diploma with Advanced Designation and be used as a fifth Regents Examination for graduation. The AAPPL, developed by Oneida-Herkimer-Madison BOCES, consists of four sections worth 100 credits: Conversation/Roleplay (Part 1) with two role plays worth 24 credits; Expressive Tasks (Part 2) featuring 2 signed stories based on a picture worth 20 points; and Receptive Tasks (Part 3) with 15 questions in response to signed passages, pictures, or advertisements worth 30 credits. The assessment requires a cut score of 65. For more information, contact Greg Smith at GSmith@oneida-boces.org. The ACTFL Assessment of Performance toward Proficiency in Languages is a standards-based assessment that accurately measures students' ability to communicate in a language. According to the NY State Learning Standards for Languages Other Than English, communication is the overarching goal of instruction. The AAPPL assesses tasks across three modes: Interpersonal, Interpretive, and Presentational, across four domains: Interpersonal Speaking and Listening, Interpretive Reading, Interpretive Listening, and Presentational Writing. The Avant STAMP™ language test was created at the University of Oregon to improve language-learning outcomes and support excellence in language programs. The test requires a cut score of STAMP level 3 (Novice High). For more information, contact Aziz Ebinghannam at aziz@avantassessment.com. The National Examinations in World Languages (NEWL) were developed by the American Councils for International Education to assess functional proficiency in interpersonal, interpretive, and presentational modes of communication. The four sections of NEWL are reading comprehension, listening comprehension, integrated writing, and integrated speaking. Reading Comprehension consists of a series of short, culturally, and linguistically authentic texts followed by one to three multiple-choice questions in English. Listening Comprehension consists of similar material to the reading section. Cut Score Required: Novice High (N-4) For more information, contact Jennifer Carson at jcarson@languagetesting.com. Examinees are asked to respond to audio prompts featuring various media formats, such as dialogues, newscasts, and radio shows, through Integrated Writing or Speaking tasks. The assessments require examinees to demonstrate their language proficiency by typing notes to friends, writing letters or emails, presenting opinions, or recording spoken responses using a headset with microphone. For more information, please contact Huma M. Shamsi at hmshamsi@americancouncils.org. The ACTFL Assessment of Performance toward Proficiency in Languages is a standards-based evaluation that measures students' ability to communicate in a language, focusing on three modes: Interpersonal, Interpretive, and Presentational. The test assesses tasks across these modes and four domains: Interpersonal Speaking and Listening, Interpretive Reading, Interpretive Listening, and Presentational Writing. Cut Score Required: Novice High (N-4). For more information, please contact Jennifer Carson at jcarson@languagetesting.com. The Avant Assessment STAMP 4S ~ Mandarin Chinese (Simplified and Traditional) was created to improve language-learning outcomes and support excellence in language programs. The test requires a Cut Score of STAMP level 3 (Novice High). For more information, please contact Aziz Ebinghannam at aziz@avantassessment.com. The Chinese Checkpoint B Examination, developed by Oneida-Herkimer-Madison BOCES, consists of four sections: Speaking (Part 1), Listening (Part 2), Reading (Part 3), and Writing (Part 4). The test requires a Cut Score of 65. For more information, please contact Greg Smith at GSmith@oneida-boces.org. The Chinese World Language Comprehensive Exam The exam is composed of four sections: Speaking (24 points), Listening (26 points), Reading (30 points), and Writing (20 points). The test includes multiple-choice questions, picture options, and dialogues for the Listening section. The Reading section consists of simple sentences, paragraph completion exercises, and gap filling tasks. The Speaking section tests students' ability to describe experiences and video content. Two writing tasks are included: a narrative description of a picture (80-100 words) and a letter writing task (80-100 words). AAPPL results are reported according to ACTFL performance descriptors. The test aims to assess communication skills in four domains: Interpersonal Speaking and Listening, Interpretive Reading, Interpretive Listening, and Presentational Writing. Cut Score Required: Intermediate Low (I-1) For more information, contact Jennifer Carson. Given article text here The American Association for Public Policy Analysis (AAPPL) offers a comprehensive assessment tool that measures students' proficiency in multilingual communities at home and globally. The AAPPL results are aligned with the ACTFL performance descriptors, emphasizing communication as the primary goal of instruction. The test requires an Intermediate Low cut score, I-1. Another language testing option is the Avant STAMP 4S ~ German, which assesses students' language skills using the University of Oregon's Standards-based Measurement of Proficiency framework. This test requires a STAMP level 4 cut score. The Comprehensive Examination in Modern Greek evaluates students' proficiency in listening, speaking, reading, and writing in the Modern Greek language. It includes four sections: Speaking (24 credits), Listening (26 credits), Reading (30 credits), and Writing (20 credits), with a minimum required score of 65. The Ellinomatheia Exam in Modern Greek offers another assessment opportunity for students, focusing on conversation, listening passages, reading passages, and writing tasks. The exam requires a cut score of 60 at the Level A2 exam ~ Intermediate Low level. Lastly, Language Testing International (LTI) is an exclusive licensee of the American Council on the Teaching of Foreign Languages' assessments, providing standardized language testing services that accurately measure students' communication skills in a language. The Italian Language Proficiency Tests Offered Several standardized tests are available to assess Italian language proficiency across various domains. The Avant STAMP 4S, a standards-based assessment developed by the University of Oregon, evaluates Italian skills in four areas: Interpersonal Speaking and Listening, Interpretive Reading, Interpretive Listening, and Presentational Writing. The test reports results according to ACTFL performance descriptors, aligning with the over-arching goal of instruction. Another option is the Avant Assessment STAMP 4S ~ Italian, requiring a minimum score of STAMP level 4 (Intermediate Low). For further information, please contact Aziz Ebinghannam at aziz@avantassessment.com. Additionally, the Oneida-Herkimer-Madison BOCES offers the Italian Checkpoint B Examination, comprising four sections: Speaking, Listening, Reading, and Writing. The test consists of two role-plays worth 24 credits, listening questions in both English and Italian worth 30 credits, reading passages worth 30 credits, and writing questions worth 16 credits. The New York City Department of Education's Italian World Language Comprehensive Exam includes four parts: Speaking, Listening, Reading, and Writing. Each section carries a specific number of points: a 24-point conversation in Speaking, 13 multiple-choice questions in Listening (26 points), 15 multiple-choice questions in Reading (30 points), and two written response questions in Writing (20 points). More information is available on the vendor's website. Lastly, Language Testing International holds the exclusive license for the ACTFL Assessment of Performance toward Proficiency in Languages. This assessment accurately measures students' ability to communicate in Italian, with an emphasis on developing cultural competence. According to NY State Learning Standards, communication is the primary goal of language instruction, and this test reflects that. The American Association of Teachers of Spanish and Portuguese Language (AAPPL) is a comprehensive assessment that evaluates students' communication skills in four domains: Interpersonal Speaking and Listening, Interpretive Reading, Interpretive Listening, and Presentational Writing. Based on the ACTFL Proficiency Guidelines, AAPPL measures students' ability to communicate effectively across three modes: Interpersonal, Interpretive, and Presentational. This aligns with the World-Readiness Standards for Learning Languages, which emphasizes the importance of cultural competence in multilingual communities. The assessment's results are reported using ACTFL performance descriptors, ensuring a clear understanding of student communication skills. For more information about AAPPL, contact Jennifer Carson at jcarson@languagetesting.com. Another assessment tool is the Avant STAMP 4S, which assesses language proficiency in Japanese and Korean languages. This test was developed to improve language-learning outcomes and support excellence in language programs. Contact Aziz Ebinghannam at aziz@avantassessment.com for more information about the Avant STAMP 4S. Language Testing International (LTI) is the exclusive licensee of ACTFL assessments, including the Assessment of Performance toward Proficiency in Languages. This assessment evaluates students' ability to communicate in a language, aligning with the NY State Learning Standards for Languages Other Than English, which emphasizes communication as the primary goal of instruction. Korean Comprehensive Exam by New York City Department of Education The Korean World Language Comprehensive Exam is a multi-part assessment developed by the New York City Department of Education. It consists of four sections: Speaking (24 points), Listening (26 points), Reading (30 points), and Writing (20 points). The Speaking section involves a conversation with a test administrator, while the Listening section includes multiple-choice questions. The exam also has its own scoring system with a cut score required for 65. For more information, contact Amy Pereplechikov at wlexams@schools.nyc.gov or visit the vendor's website. The Listening, and Presentational Writing assessment evaluates students' skills in three modes of communication as outlined by the World-Readiness Standards for Learning Languages. These standards aim to help learners develop effective communication and cultural competence in multilingual communities worldwide. The AAPPL results are aligned with ACTFL performance descriptors, ensuring that instruction focuses on communication as its primary goal. The test requires an Intermediate Low (I-1) score cut-off. Additionally, the Avant STAMP 4S ~ Portuguese language test assesses students' proficiency at a STAMP level 4 (Intermediate Low). The National Examinations in World Languages (NEWL) evaluates functional proficiency in interpersonal, interpretive, and presentational modes of communication. The four sections include reading comprehension, listening comprehension, integrated writing, and integrated speaking. Language Testing International is the exclusive licensee of ACTFL assessments, providing accurate standards-based evaluations of students' language abilities, particularly in terms of communication. Reading, Interpretive Listening, and Presentational Writing are assessed in this test. It follows the World-Readiness Standards for Learning Languages, which emphasizes effective communication and cultural competence. The results are reported according to ACTFL performance descriptors for each mode. A Novice High level is required as a cut score. For more information, contact Jennifer Carson. Avant Assessment's STAMP 4S ~ Russian test measures language proficiency. It has a cut score of STAMP level 3 (Novice High). Contact Aziz Ebinghannam for more details. The National Examinations in World Languages (NEWL) ~ Russian test assesses functional proficiency in reading comprehension, listening comprehension, integrated writing, and integrated speaking. A Novice High level is required as a cut score. Contact Huma M. Shamsi for more information. Language Testing International (LTI) is the exclusive licensee of ACTFL assessments. The ACTFL Assessment measures students' ability to communicate in a language. According to NY State Learning Standards, communication is the over-arching goal of instruction. ACTFL defines communication as three modes: Interpersonal, Interpretive, and Presentational. Reading, Interpretive Listening, and Presentational Writing assessments evaluate students' skills across three communication modes as outlined in the World-Readiness Standards for Learning Languages. These standards are aligned with ACTFL performance descriptors, indicating that effective communication is the primary instructional goal. AAPPL exams require an Intermediate Low (I-1) cut score. For more information, contact Jennifer Carson at jcarson@languagetesting.com or visit Avant Assessment STAMP 4S website for details on this exam, which requires a STAMP level 4 (Intermediate Low) cut score. This document has been updated multiple times to include various language assessments and vendor information. Updates were made on November 7, 2022, to incorporate Spanish AAPPL assessments. Earlier changes occurred in May 2022 for AAPPL where Chinese, French, Italian, and Korean assessments were added, as well as a contact update for LTI. The document was reorganized by vendor and updated with new languages starting from August 17, 2021. It also included the transition of "LOTE" to "World Languages" by the Board of Regents. On February 10, 2021, Avant Assessments STAMPS 4S (Arabic and Spanish) were added, followed by an update for AAPPL on August 24, 2020, which included Arabic assessments. On March 21, 2019, ASL from OHM BOCES, Chinese, French, Italian, and Korean from NYC DOE were added. Previous updates occurred on January 22, 2019, and October 31, 2018, for OHM BOCES contact information. The document also saw updates on March 29, 2018, for the NYC DOE contact person and March 12, 2018, with the creation of a LOTE assessment list.