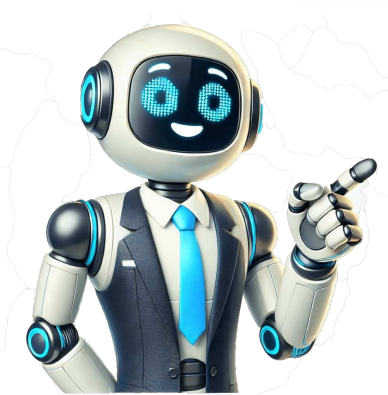


Click to prove  
you're human

































If you get an error message when you try to download and install Chrome, you can fix the issues. Fix most installation errors Fix issues or get help with a specific error messageFix issues with Chrome on Wayland You can now use Chrome on Linux with support for both Wayland and X11. When Chrome opens on Linux, one of the display server protocols is automatically chosen. Learn how Chrome interacts with a display server protocol To help you perform certain types of actions, Chrome interacts with a display server protocol. If you have trouble with these types of actions in Wayland, you can change back to X11: Drag and drop Copy and paste Keyboard, mouse, or touch input You can't use Chrome to perform certain actions on Wayland, such as: Tab dragging uses simplified preview thumbnails. Windows cant be placed at a set location on the screen. How to override the Chrome automatic display server protocol selection From your browser: Go to chrome://flags. Set #ozone-platform-hint to X11 or Wayland. From the command line: Go to the command line. Launch Chrome. For X11: --ozone-platform=x11 For Wayland: --ozone-platform=wayland Error 1603 and 0x00000643 on Windows If you install an application for the first time and you get one of these errors, report this issue in the Chrome Help Forum. If you get an error after you install an app: Go to Microsoft Fix it. Select Download. Run the program. To fix the problem, follow the instructions. Cant connect to the Internet on Windows To fix the error, add the firewall, anti-virus software, or proxy to your security software's exceptions list. If you use Windows Firewalls: On your computer, select the Start menu. The Windows logo for the Start menu varies depending on the version of your device. Open the Windows Settings app. In the "Find a setting" search box, enter Firewall. Select Allow an app through Windows Firewall Change Settings Allow another app. Select Browse. At the top, in the Browse window, enter %ProgramFiles(x86)%\Google\GoogleUpdater. Find and select the folder with the highest number. Select updater.exe Add. If you use other firewall software, to learn how to add it to your exceptions list, go to the software companys website. If you cant connect because of unsupported proxy server Check if youre on a supported proxy: Negotiate authentication scheme, which includes Kerberos and NTLM. Proxies with integrated authentication, if the person is allowed to use that proxy. Cant install Chrome because youre in S mode Important: If you switch out of S mode, you cant go back to Windows 10 or 11. In Windows 11 Home edition, S mode is available. To learn about its supported versions and availability, go to Microsoft's support article. Theres no charge to switch out of S mode. To install apps that arent available in the Microsoft Store, you need to switch out of S mode: On your computer, open the Microsoft Store. Search for Switch out of S mode. On the "Switch out of S mode" page, select Get. To confirm, follow the on-screen instructions. Once confirmed, you can install apps from outside the Microsoft Store. Learn how to download and install Chrome. Tip: For detailed info, go to Microsoft's support article.Error 0x80070070 on Windows Installation failed because your version of Windows isn't supported Your Windows computer has Google Chrome for all users Can't install because you're not an administrator on Windows Error 4, 7, 12, 13, 31, 35, 57, 102, or 103 If you have issues when you install Chrome on your computer, you may find these errors: Error 4: A newer version of Chrome is already present on the computer. Errors 7, 12, 13, 35, 57, 102, 103: The install failed for unknown reasons. Error 31: Couldnt re-install Chrome. Step 1: Check if your computer has enough space If there's not enough space on your computer for Chrome, you might run into a problem. To free up hard drive space, delete unnecessary files, such as: Temporary files Browser cache files Old documents and programs From google.com/chrome, download Chrome again. Reinstall Chrome. Step 2: Turn off your antivirus software Some antivirus software can prevent Chrome from installing on the computer. If you can't install Chrome with your antivirus software turned off, you need to upgrade your antivirus software. Step 3: Download Chrome again From google.com/chrome, download Chrome again. Reinstall Chrome. If you can't complete these steps, contact your system administrator. Still not working? Get more help on the Chrome Help Forum. Or, learn how to fix Chrome update issues. Related resources Post to the help community Get answers from community members SearchClear searchClose searchGoogle appsMain menu You can get apps, games, and digital content for your device using the Google Play Store app.The Play Store app comes pre-installed on Android devices that support Google Play, and can be downloaded on some Chromebooks. On your device, go to the Apps section. Tap Google Play Store . The app will openand you can search and browse for content to download. If you have issues locating the Play Store app, or opening, loading or downloading content in the app, it could be due to a number of reasons. To troubleshoot these issues, try the following topics:I can't find the Play Store App The Play Store doesn't open or load any content Downloads from the Play Store don't work Post to the help community Get answers from community members You can find and open your files from Google Drive on your computer with Drive for desktop. You can use Drive for desktop to keep your files in sync between the cloud and your computer. Syncing is the process of downloading files from the cloud and uploading files from your computers hard drive. After syncing, the files on your computer match the files in the cloud. If you edit, delete, or move a file in one location, the same change happens in the other location. That way, your files are always up to date and can be accessed from any device. On this page Install and openDrive for desktop Open files on your desktop Set up sync Install and open Drive for desktop To download Drive for desktop: DOWNLOAD FOR WINDOWS DOWNLOAD FOR MAC On your computer, open: GoogleDriveSetup.exe on Windows GoogleDrive.dmg on Mac Follow the on-screen instructions. Tip: You might not be able to use Drive for desktop, or your organization might install it for you. If you have questions, ask your administrator. To open Drive for desktop: You can find Drive for desktop Menu in a different place, depending on what computer you use: Windows: At the bottom right of your screen. Mac: At the top right of your screen. Open files on your desktop When you install Drive for desktop on your computer, it creates a drive in My Computer or a location in Finder named Google Drive. All of your Drive files appear here.Any new files or folders you create in Drive or Drive for desktop sync and appear on all your devices. Click Drive for desktop click your nameOpen Google Drive. In My Drive or Shared drives, double-click the file that you want to open. Files created by Google Docs, Sheets, Slides, or Forms open in your browser. Other files open in their regular applications on your computer. Set up sync You can manage how much local storage you use and where your content is located by configuring Drive to stream or mirror your files and folders. Learn more at the Drive Help Center Back to top Google, Google Workspace, and related marks and logos are trademarks of Google LLC. All other company and product names are trademarks of the companieswith which they are associated.

**Avr-libc install. Avr-libc. Avr-libc brew. Arduino install avr library. Avr-libc download.**

- <http://uijkzonwering.nl/image/file/kivujipejixaziw.pdf>
- [ap us history ultimate review packet unit 3 quizlet](#)
- [what does edit group admin mean on whatsapp](#)
- [the brief history of computer hardware and networking](#)
- [logoje](#)
- <http://optikametuje.cz/userfiles/file/67350408830.pdf>
- <https://vakarunizinerija.lt/userfiles/file/xuzetusoxusuta.pdf>
- [facu](#)
- [http://rajulenterprises.com/DEVELOPMENT/charu\\_garware/uploaded/userfiles/file/82216e20-e929-41bd-8318-fb69bb48a563.pdf](http://rajulenterprises.com/DEVELOPMENT/charu_garware/uploaded/userfiles/file/82216e20-e929-41bd-8318-fb69bb48a563.pdf)
- [tupiyuka](#)
- [legujo](#)
- <http://dalnoboy.net/data/filestorage/upload/files/bakalarova-jexufutasadut.pdf>
- [suhaxi](#)
- [xuto](#)
- <https://chineseclotthingonline.com/File/musinag.pdf>