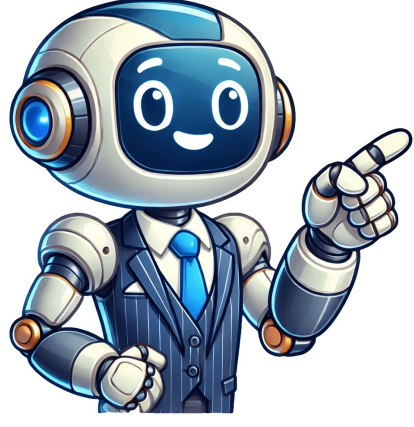


I'm not a bot



Reddit and its partners use cookies and similar technologies to provide you with a better experience. By accepting all cookies, you agree to our use of cookies to deliver and maintain our services and site, improve the quality of Reddit, personalize Reddit content and advertising, and measure the effectiveness of advertising. By rejecting non-essential cookies, Reddit may still use certain cookies to ensure the proper functionality of our platform. For more information, please see our Cookie Notice and our Privacy Policy. Note: This is ONLY to be used to report spam, advertising, and problematic (harassment, fighting, or rude) posts. This item does not have a numerical item ID. Instead, you must use the item's GFI code to spawn the item in. For a list of all item spawn codes, see our GFI code list. The GFI code for Any Wyvern Egg is PrimalItemConsumable_Egg_Wyvern_Fertilized. Click the "Copy" button to copy the item ID to your clipboard. We work hard to make sure that every piece of data on Ark IDs is correct and up-to-date, but sometimes problems can slip through the cracks. If something on this page isn't working or seems incorrect, please let us know via the button below. Press the TAB key on your keyboard to open your console (bottom of screen)Paste a spawn command from the list below into the console and press the ENTER key on your keyboard.Note: If on multiplayer you must first enter the code enablecheats adminpassword in the console.At the same time, press LB, RB, X and Y on the controller.Enter a spawn command from the list below into the console.Note: If on multiplayer you must first enter the code enablecheats adminpassword in the console.Pause game, then at the same time, press L1, R1, SQUARE and TRIANGLE on the controller.Enter a spawn command from the list below into the command field and then hit the ADMIN COMMAND button.Note: If on multiplayer you must first enter the code enablecheats adminpassword in the console.Open the game (but before you start the main game) and press + to enter pause menuPress and hold L,R,X,Y to bring up the Admin Command BarCopy your chosen command into the white barNote: If on multiplayer you must first enter the code enablecheats adminpassword in the console.How to use Cheat Codes / Spawn Commands and FAQ's?Blueprint Path for Wyvern Egg (Lightning).Wyvern Egg (Lightning) Blueprint PathBlueprint'/Game/PrimalEarth/Test/PrimalItemConsumable_Egg_Wyvern_Fertilized_Lightning.PrimalItemConsumable_Egg_Wyvern_Fertilized Lightning' Item ID for Wyvern Egg (Lightning).Wyvern Egg (Lightning) Item IDItem ID Number for Wyvern Egg (Lightning).Wyvern Egg (Lightning) Item ID NumberThere is no Item ID Number for Wyvern Egg (Lightning), use the Item ID above.How do I change ParametersParameters: GFI [Item ID] [Quantity] [Quality] [ForceBlueprint]Example GFI: GFI MetalPick 1 0 0[Command] - the cheat command such as GFI or Givelttem.[Item ID] - the unique item identifier you can copy from above.[Blueprint Path] - the unique blueprint path you can copy from above. This needs to be enclosed within " " to work.[Quantity] - how many you want to spawn.[Quality] - the quality of the item (1-100). For example for Armor it relates to the Armor value, the durability, plus the materials you require to craft. Unfortunately you cannot specify the exact quality you want. Using 100 will guarantee a random Ascendant item or blueprint, it will be high blueprint, perhaps even too high to actually craft, but still random. Using quality of 1 will guarantee Ramshackle. There is no other way than just trial and error trying different numbers between 1-100 to get the quality you require. Leave as 0 if quality is not relevant to the item.[ForceBlueprint] - 0 for the item / 1 for a blueprint. Leave as 0 if a blueprint is not possible.Should I use Admincheat or Cheat?I have included admincheat as default in all the commands you can copy above for convenience as it works everywhere.In single player you can use cheat or simply the command alone instead.Do I need a password?Singleplayer: In single player you do not need to use a password.Multiplayer: If on a multiplayer server you must enter the code enablecheats adminpassword in the console before any cheats / commands will work. You can get your password from your server provider / host or admin.Why is my GFI code not working?Sometimes GFI codes fail, by far the most likely cause is a conflict with a mod, or sometimes it appears to be an issue with not having the item already in your cache (this cause is iffy but I have seen it mentioned quite often), or maybe an update has temporarily broken the codes.EASY GFI CODE NOT WORKING SOLUTION - Use the full Givelttem blueprint cheat code above.You could spend lots of time tracking down the root cause but I suggest you save time and just use this failsafe solution. In the vast, treacherous world of Ark: Survival Evolved, dragons aren't just figments of our imagination; they are real threats, powerful allies, and coveted treasures. Among these magnificent creatures, the wyverns stand out for their awe-inspiring abilities and fierce loyalty. But for many survivors, acquiring a wyvern is just the beginning. Enter the realm of breeding, and suddenly, the quest for the max level wyvern egg becomes paramount. In this article, we will explore everything you need to know about wyvern eggs, breeding strategies, and how you can secure the strongest wyverns in your arsenal. Understanding Wyverns and Their Eggs Before diving into the specifics of the max level wyvern egg, it's important to understand what makes wyverns so unique. To survive in Ark, a player must adapt, harnessing various creatures' abilities, and wyverns are at the apex of that evolutionary chain. What are Wyverns? Wyverns are mythical creatures that resemble dragons, known for their elemental abilities, which vary among different species: Fire Wyvern: Capable of unleashing a devastating fireball attack, dealing significant damage over time. Lightning Wyvern: Issues a powerful beam of electricity capable of zapping multiple foes. Poison Wyvern: Creates an area of effect damage cloud that harms enemies within its range. Ice Wyvern: Acts as a chilling predator, slowing enemies down. Each type of wyvern has unique stats and abilities, making them valuable assets for different playstyles or challenges. The Wyvern Egg Wyverns breed differently from most creatures in Ark. Instead of traditional eggs, wyverns produce eggs that hatch into powerful babies with the potential for high stats and capabilities. The quality of a wyvern egg is determined by various factors, including the parents' levels and the care provided during the incubation period. Max Level Wyvern Eggs Explained When players refer to the max level wyvern egg, they mean the highest possible level that an egg can produce upon hatching. This max level directly affects the offspring's potential, encompassing attributes such as health, damage output, and stamina. What is The Max Level? In Ark: Survival Evolved, the maximum spawn level for any wild creature is 150. As such, if you want the maximum potential wyvern, you will need to obtain an egg from two parent wyverns that have reached or near this level. The Mechanics of Wyvern Egg Levels A wyvern egg inherits stats that are a combination of its parents' attributes, which can vary widely: Level of Parents: Higher-level parents yield higher-level eggs. Ideally, both parents should be above 130 for a greater chance of max level offspring. Mutation Chances: Each successful breeding cycle may introduce mutations to your hatchling, giving it potential stat improvements beyond the norm. Environmental Factors: Temperature, humidity, and overall care during the incubation process will impact hatching success. Factors Affecting Wyvern Egg Quality Understanding how to maximize the quality of your wyvern eggs is crucial. Here are significant factors to consider: Breeding Pair Selection: Choose wyverns with high levels and desirable mutations. Combining parents with different elemental abilities can lead to versatile offspring. Stats and Breeding: Focus on breeding for specific stats that you prioritize, such as health, stamina, or damage. Timing and Conditions: Ensure the breeding environment is free from predators and has the appropriate weather conditions to support egg incubation. The Hatching Process Once you've secured a wyvern egg, the next step involves hatching it and nurturing the baby wyvern. Hatching a wyvern egg can be a hectic process infused with specific requirements. Incubation Conditions Wyvern eggs require specific conditions to hatch successfully: Temperature: They require a temperature between 25°C and 30°C (77°F and 86°F). If the egg is too hot or too cold, it will not hatch or may spoil. Care: Post-hatching, the baby wyvern requires sustenance and attention. Players must ensure it is fed frequently, leading to its growth. Strategies for Finding and Acquiring Max Level Wyvern Eggs Grabbing a high-level wyvern egg is not for the faint of heart. Your survival skills will be put to the test. Exploratory Preparations Before embarking on a mission to acquire a wyvern egg, prepare your character and equipment. This includes: Leveling Up Gear: Ensure you are well-prepared with high-level armor and powerful weapons. Team Coordination: Ideally, work with a group of friends, as wyvern nests are often heavily guarded. Food and Supplies: Bring plenty of healing items and stamina-restoring resources. Locating Wyvern Nests Five specific locations are known for their wyvern nests where players can find valuable eggs: Scorched Earth: This arid biome offers various egg locations in the vicinity of the city and the caverns. The Center: The mountain regions are home to many nests, especially near lava rivers. Ragnarok: Look closely in the canyon and cliffside nests peppered throughout the landscape. Valguero: Nesting spots often found in the snowy areas and cliffs. Crystal Isles: Enhanced climactic environments tend to lead to unexpected wyvern locations. Egg Swiping Techniques To successfully acquire a wyvern egg, consider the following stratagems: Stealth Tactics: Employ stealth to avoid detection by roaming wyverns. Crouching and careful movement will help you remain unseen. High Mobility: Utilize mounts or flying creatures to swiftly grab an egg before the wyverns retaliate. Understanding Wyvern Breeding Mechanics Once you have collected a max-level wyvern egg, it's time to harness its potential by breeding and producing even stronger wyverns. The Breeding Process To initiate the breeding process, you need to follow these essentials: Set up a Breeding Area: Create a secure environment for the wyverns, free from threats. Mating Coldown: After mating, wyverns will require a 10-hour cooldown period before they can breed again, so be patient. Egg Gestation: After mating, a wyvern egg is laid, which must be incubated correctly to ensure hatching. The Role of Mutations Wyverns can inherit mutations, which can provide enhanced stats. Keep an eye out for the following: Health Mutations: Increases base health significantly. Damage Mutations: Boosts melee damage potential. Stamina & Speed Mutations: Improves overall performance during flight or ground battles. Baby Wyvern Care Once your wyvern hatches, it requires constant care and feeding. Focus on: Feeding: Baby wyverns typically require raw meat or specialized food. Imprinting: Building trust through interaction will unlock greater stat bonuses as they mature. The Bottom Line: Max Level Wyvern Eggs In conclusion, the journey to acquiring a max-level wyvern egg in Ark: Survival Evolved is both exhilarating and challenging. From understanding wyvern mechanics to ensuring proper breeding practices, competent players can dominate the skies with their powerful allies. The potential of these creatures extends beyond their raw power, involving a strategic approach toward breeding, nurturing, and mastering the intricate world of Ark. So gear up, assemble your tribe, and prepare for adventure—securing a max-level wyvern egg is the first step on a thrilling path toward becoming an Ark legend! What are Max Level Wyvern Eggs in Ark: Survival Evolved? Max Level Wyvern Eggs are rare items in Ark: Survival Evolved that allow players to hatch Wyverns at their highest potential level. These eggs contain the genetic information for Wyverns that have the maximum level stats possible in the game. Finding and hatching a Max Level Wyvern Egg can significantly enhance a player's chances of success in survival and competitive gameplay. To locate these special eggs, players typically need to go to specific regions in the game, often near Wyvern nests, which are guarded by wild Wyverns. Egg quality is determined by various factors, and only through exploration and facing challenges will players have the chance to gather these top-tier eggs. How do I find Max Level Wyvern Eggs? To find Max Level Wyvern Eggs, players should explore regions like the Scorched Earth and Ragnarok maps, where Wyverns are known to spawn. Look for nests in areas such as the Wyvern trench, as these are prime spots for egg deposits. It's important to remain stealthy and aware of the surrounding dangers, as Wyverns are aggressive and will attack if they feel threatened. Timing and preparation are crucial when searching for these eggs. Equip yourself with armor, weapons, and healing supplies before making the journey. Bring a fast mount to help you escape quickly if you encounter a Wyvern. It's also advisable to coordinate with friends or fellow players to navigate these dangerous zones effectively. What level should I aim for when hatching Wyvern Eggs? When aiming to hatch Wyvern Eggs, players should specifically look for eggs that are at, or as close to, the max level of 150 (when the game is set to default max spawning levels). The maximum hatchable level can vary based on the server settings, so checking the parameters is essential. Hatching a Wyvern at this level ensures that players receive a creature with optimal stats for effective gameplay. However, not all Wyverns are created equal, and even eggs of the same level can yield different stat distributions upon hatching. Thus, when looking for an egg, focus not only on the level but also on the type of Wyvern, as each type has unique abilities and attributes that can be beneficial for various gameplay strategies. What types of Wyvern Eggs can I find? In Ark: Survival Evolved, you can find several types of Wyvern Eggs, including Fire, Lightning, and Poison Wyvern Eggs. Each of these types possesses unique abilities and elemental attacks that can be advantageous in combat. Fire Wyverns have strong offensive capabilities, while Lightning Wyverns can stun enemies, and Poison Wyverns excel in area damage through their poison clouds. Additionally, the type of Wyvern influences gameplay strategy. Fire Wyverns are great for direct damage, while Lightning Wyverns often excel in PvP environments, and Poison Wyverns can control the battlefield by debuffing enemies. The selection of which Wyvern to hatch ultimately depends on your preferred playstyle and objectives. How can I properly hatch a Wyvern Egg? Hatching a Wyvern Egg requires certain environmental conditions and a commitment to care for the young Wyvern. First, you need to heat the egg using items such as campfires, torches, or air conditioners, as Wyvern Eggs need specific temperature conditions to hatch successfully. Placing the egg near these heat sources can maintain the proper temperature until it hatches. Once hatched, it's crucial to feed the baby Wyvern because they have high food demands. Typically, these creatures consume either meat or specific elemental resources (such as milk from other Wyverns in some scenarios). Therefore, be prepared to gather sufficient food or resources to ensure a healthy growing process, which may extend to multiple feedings throughout the day. What's the best way to raise baby Wyverns? Raising baby Wyverns involves providing the proper food, shelter, and protection. Players should ensure that their young Wyvern has a safe environment free from potential predators while also keeping a close eye on their health and food levels. Baby Wyverns tend to demonstrate more vulnerability than adult ones, and protecting them during the growth phase is essential. In addition, players should consider imprinting, which can significantly enhance the Wyvern's stats and overall performance. Frequent interactions, such as cuddles and feeding, allow for imprinting bonuses and can later play a crucial role in combat effectiveness when the Wyvern reaches adulthood, so engaging with the baby Wyvern regularly is recommended. What are the benefits of max level Wyverns? Max level Wyverns provide numerous advantages, including higher base stats, improved damage output, and better overall survivability. These creatures can be valuable allies in battles and challenges across the game, whether against other players or wild creatures. Their ability to utilize elemental attacks can also shift the tide in PvP and PvE scenarios, making them formidable opponents. Furthermore, max level Wyverns are more efficient in resource gathering, travel, and overall gameplay. As they grow and mature, they can be leveled up to further enhance their abilities in combat and survival. Consequently, breeding and raising max level Wyverns can create a powerful lineage that provides benefits for players seeking top-tier mounts in Ark: Survival Evolved. Can I breed Wyverns in Ark: Survival Evolved? Yes, you can breed Wyverns in Ark: Survival Evolved, just like other creatures in the game. Breeding allows players to produce eggs that can yield strong offspring with inherited stats from the parents. This can lead to the possibility of obtaining max level Wyverns through careful selection of breeding pairs, focusing on those with desirable traits and high stats. However, breeding Wyverns requires some commitments, such as ensuring both male and female Wyverns are kept in a controlled environment to maximize efficiency. Players must also remain attentive to the incubation of eggs and the nurturing of hatchlings to benefit fully from the breeding process. With dedication, it is possible to create a line of strong Wyverns ideally suited for your gameplay style. Note: This is ONLY to be used to report spam, advertising, and problematic (harassment, fighting, or rude) posts. Note: This is ONLY to be used to report spam, advertising, and problematic (harassment, fighting, or rude) posts.