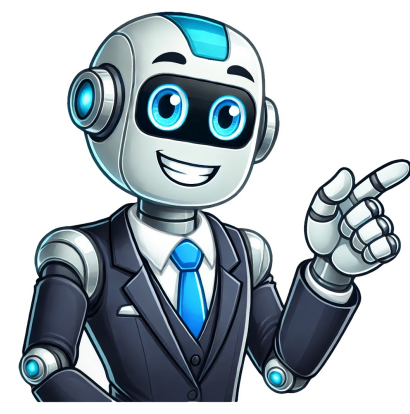


I'm not a robot





































CodeDescriptionPossible CauseSolutionWater is notWater tap may not be turned on.Check water tap, watersupplied.Water inlet filter may be clogged.inlet filter, water line andWater line or water hose may be frozen.water hose.Water supply may be cut off.Water is notDrain hose or drain pump may be clogged.Check drain hose, draindrained.Drain hose may be kinked or frozen.pump and drain outlet.Drain hose may not be set correctly.If C02 still appears afterHeight of the drain outlet may be too high.removing the possiblecause, please contactyour local service centerfor repair.Spin cycle doesClothes may be imbalanced in the drum.Add a few clothes to theenot function.You may be washing only one heavy itemdrum. (Spinning onlysuch as a cotton blanket or jeans, or smallone item may result initems in a laundry net.imbalance.)You may be washing too many large itemsuch as bed sheets.The washing machine may be installed on a slanting floor or may not be level.You may be washing waterproof or antislipreated items.Page 9 : Before You Start Washing(Sorting the laundry)Door lock doesThe door may be open.Check the door andnot function.The door may not be closed completely.close firmly.Door unlock doesLaundry may be exceeded 8.5 kg and doorSwitch power off andnot function.is pushed from inside.press the door to close.tightly, Hold that positionand switch power on,sand wait until the doorlock is released.Malfunction ofThere may be other appliances thatMove the appliancesvibration sensorgenerate electrical noise near the washingaway from the washingmachine.machine.Spin cycle doesThe drain hose may not be set correctly.Same as in C02.not function.There may be too much foam in the drum.C19Over loadedLaundry may exceed rated capacity.See page 16 for max.load of each program.Water flows outDrain hose end is set lower than 60 cm.See page 25 for properfrom drain hoseheight on drain hosewhile washing.setting.233WPL090501Page 2Possible CauseSolutionFoam remainsYou may have used too much detergent.Use the appropriate amount ofon the door orLaundry is new or not that soiled.detergent.the door seal.Fabric softenerYou may have exceeded the max. level ofDo not pour in more than theoverflow,softener in the detergent dispenser .max. level of softener.Fabric softenerThe softener cover may have come out.Firmly set the softener coverremains.on the detergent dispenser.TheresYou may have used too much detergent.Use the appropriate amount ofdetergentYou may have poured detergent in thedetergent.powder residueWipe the water away before the detergentdetergent dispenser when it was wet. Wipeadding detergent dispenser the water away before adding detergent.The washingThere may be noise from other electricalUnplug the power cord andmachineappliances nearby such as a TV, a radio,plug in again. Then selectswitches ofetc.a program and start. Do notduring operation.place electrical appliancesThe motor may be locked due to overload,close to the washing machine.This is not a malfunction. Waitthe clothes being trapped in the rubber seal,for about one hour and restartetc.the program.Odor in theRubber parts may give off a smell when youThe smell goes away overwashingfirst start using the washing machine.time.machineThere may be mold, dirt or detergentRun the Tub Clean program.residue on the drum.UnsatisfactoryYou may have used too little detergent.Use the appropriate amount ofwashing resultsYou may have poured detergent directly into detergent.Pour detergent in thethe drum.appropriate dispenser.Unusual noise ofThe transport bolts may not have beenRemove the transport boltsvibrationremoved.before using.The washing machine may be installed on alinstall the washing machine onslong or unstable surface.a horizontal, stable surface.There may be foreign objects inside thedrum.coins, pins, etc. from the drum.Noise duringThis is normal. There may be noise whenThis is not a malfunction.drain cyclethe drain pump is on.Theres theThis is normal. Liquid is inside the 4-PlyThis is not a malfunction,sound of water.Liquid Load Balancer fixed onto the drum towhen the drum ismake it balanced.rotated manually.Tapping noiseThis is normal. Tapping sound is generatedThis is not a malfunction.comes out atwhen laundry touches to the laundryspin start.protection bulge on the laundry inlet.DetergentIn some environmental or usage conditions,This is not a malfunction.dispenser is wet.Detergent dispenser may get wet due tocondensation.Water remains inThere may be drops of water orThis is not a malfunction.washing machinecondensation in the washing machine duebefore initial use. to the factory inspection prior to shipment.22 CODE:ChnPROBLEM:The spinning speed does not reach the specified value. FIX:Check if there is too much powder detergent? Check if the drain hose is clogged? Check if the drain hose is installed correctly?Hitachi Washer TroubleshootingRelated Error Code Pages:Hitachi Refrigerator Error Codes, Hitachi Washer Error Codes, Hitachi Microwave Error Codes, Related Troubleshooting Pages:Hitachi Refrigerator Troubleshooting, Hitachi Washer Troubleshooting, Hitachi Microwave Troubleshooting, Related Repair Pages:Hitachi Refrigerator Repairs, Hitachi Washer Repairs, Hitachi Microwave Repairs, Related Parts Pages:Hitachi Refrigerator Parts, Hitachi Washer Parts, Hitachi Microwave Parts, Related Price Pages:Hitachi Refrigerator Prices, Hitachi Washer Prices, Hitachi Microwave Prices, Related Pages:washer repairs services, washer unit servicing cost, home washer service, washer unit service cost, Hitachi Washer Error Codes Hitachi Washer diagnostic codes Hitachi Washer error symbols Hitachi Washer common faults Easy to use. Awesome product!Published: November 29, 2015V good like all other Hitachi products, im using this for last one month, nV good like all other Hitachi products, im using this for last one month, no issues found, water pressure is very high, so be careful while washing car or bikes..Published: October 26, 2018Excellent delivery ...and product too...worth every penny spent on, all sExcellent delivery ...and product too...worth every penny spent on, all side accessories in Gud condition with no damage or defects...highly satisfied with the seller and keep doing the GUD workPublished: August 15, 2015It produces the high pressure, we adjust the pressure in the nozzle. Best fit produces the high pressure, we adjust the pressure in the nozzle. Best for cleaning motorcyle and car.Published: August 22, 2018Excellent product! I don't have to go to a car wash now for my S-crossExcellent product! I don't have to go to a car wash now for my S-cross. Must use with care. The water pressure is very high, can damage eye and other body parts easily, if the water hits directly. No kids please. Can clean dirty floor and pavements easily.Published: September 1, 2018My Name is Pawan \*\*. Last year I bought your split AC but I am not satisfieMy Name is Pawan \*\*. Last year I bought your split AC but I am not satisfied with its cooling. I did many complaints but am not satisfied with it because your serviceman come my home and tell me. Your room temperature high so Hitachi AC do not cooling well. I want to ask you if my room temperature is low then we have no need AC. We install AC if our room temperature is not low so I completely unsatisfied with your A.C. I want to change it neither I will Brock it and upload its Brock video on your website. Pawan \*\*. \*\* registered mobile.Published: April 23, 2019 Hitachi Washing Machine Error Code Hitachi washing machines, despite their durability and dependability, are susceptible to breakage and malfunction. Its time to troubleshoot your Hitachi washing machine if its not working properly or if any of the features arent working.In this article you will find an explanation and error handler of Hitachi washing machines such as C01, C02, C03, C04 till C09 etc. You can figure if machine not spinning, not draining or having problem with control board.Even if your washing machine is still under warranty, the diagnostics and repair process could take a few weeks. Why wait when you can solve your problems on your own?Repair and maintenance instructions for various Hitachi washing machine models can be found below. They are designed in the form of tables for your convenience: you can quickly locate one of the most common technical issues, determine what could have caused it, and repair the structure on your own.The instructions were written by the official manufacturer and are simple enough for the average consumer to understand.In addition, the error codes for the most popular washer models are included. If the washing machine displays a specific error code, you can quickly identify the issue and resolve it no need to look through the written manual.Please keep in mind that some models have the same set of error codes, so if your washer model isnt listed, some manuals can still apply.The vast majority of technical issues with Hitachi washers can be resolved on ones own. If you dont have any technical knowledge, however, contact a competent support center. Hitachi BD-W3300 washer error codeHitachi BD-W75TSP washer error codeHitachi HWF-800X washer error codeHitachi SF-140SV washer error codeHitachi SF-P90DJ washer error code Despite being long-lasting and reliable, Hitachi washing machines are also prone to malfunctioning and breaking. If your Hitachi washing machine doesnt work correctly, or some of its functions have become unavailable, its time to perform the troubleshooting process. Even if your washing machine is still covered by the official warranty, the process of diagnostics and repair might take a few weeks. Why wait when you can eliminate the issues without anyones help?Below, you can see repair and maintenance instructions for different models of Hitachi washing machines. For your convenience, they are made in the form of tables: you can easily find one of the most widespread technical problems, define what might have caused it, and fix the construction on your own. The instructions were provided by the official manufacturer, and theyre easy for understanding by an average user.Moreover, the error codes for the most popular washer models are included, as well. If you see the washing machine displaying some certain error code, you can easily define the problems and eliminate it theres no need to search for the printed manual. Please, note that some models have the same error code set, so if theres no mentioning of your washer model, some manuals can be applicable, too.The vast majority of Hitachi washers technical problems can be solved on ones own. But if you lack technical expertise, call the professional service center.Hitachi BD-W75TSP washer error code CodeDescriptionPossible CauseSolution C01Water is not supplied.Water tap may not be turned on.Check water tap, water inlet filter, water line and water hose. Water inlet filter may be clogged. Water line or water hose may be frozen. Water supply may be cut off. C02Water is not drained. Drain hose or drain pump may be clogged.Check drain hose, drain pump and drain outlet. If C02 still appears after removing the possible cause, please contact your local service center for repair. Drain hose may be kinked or frozen. Drain hose may not be set correctly. Height of the drain outlet may be too high. C04Spin cycle does not function. Clothes may be imbalanced in the drum.Add a few clothes to the drum. (Spinning only one item may result in imbalance.) You may be washing only one heavy item such as a cotton blanket or jeans, or small items in a laundry net. You may be washing too many large items such as bed sheets. The washing machine may be installed on a slanting floor or may not be level. You may be washing waterproof or antislip treated items. C08Door lock does not function. The door may be open.Check the door and close firmly. The door may not be closed completely. C08Door lock does not function. The door may not be closed completely. C09Door unlock does not function. Laundry may be exceeded 7.5 kg and door is pushed from inside.Switch power off and press the door to close tightly. Hold that position and switch power on, and wait until the door lock is released. C14Malfunction of vibration sensor There may be other appliances that generate electrical noise near the washing machine.Move the appliances away from the washing machine. C18Spin cycle does not function. The drain hose may not be set correctly.Same as in error C02. There may be too much foam in the drum. C19Over loaded Laundry may exceed rated capacity. C30Water flows out from drain hose while washing. Drain hose end is set lower than 60 cm.Hitachi BD-W3300 washer error code Indicator and meaningPossible cause and solution C01 - Water cannot be supplied.Press (START/PAUSE) button to pause. Make sure the tap is open. Make sure the water supply inlets filter is not clogged. Check whether a water outage has occurred. Make sure the water supply pipe or water supply hose is not frozen. Press (START/PAUSE) button to start the operation. C02 - Water cannot be drained.Press (START/PAUSE) button to pause. Make sure the drain hose or drain outlet is not clogged with lint or other debris. Make sure the drain hose is installed properly. Make sure it is not pinched or frozen. Make sure it is laying flat. Make sure the end of the hose is not submerged in water. Make sure it does not rise 10 cm or more above the ground at any point. When using an extension hose, make sure the hose does not exceed 2 m in length. Press (START/PAUSE) button to start the operation C03 - The door is open.Press (START/PAUSE) button to pause. Close the door. For safety, the door is locked during operations. Make sure the door stopper is retracted. Use a coin or similar object to turn the door stopper counterclockwise until it clicks into place. Press (START/PAUSE) button to start the operation. C04 - Spinning is not possible.Press (START/PAUSE) button to pause. Make sure the laundry is not concentrated on one side. Distribute the laundry in the drum as evenly as possible. (Even if it appears even, items made of cotton, for example, can become heavy with water, causing imbalance if concentrated in one area.) Do not wash thick items (cotton blankets, jeans, etc.) or items in mesh laundry bags alone. Add 2 or 3 more items, and wash together. (Single . pieces of laundry tend to gravitate to one side.) Do not wash too many sheets or large items at one time. Reduce the number of large items. Make sure the machine is stable and installed on a level surface. Make sure the air bubble in the spirit level is inside the circle. Do not load items that cannot be washed or dried. Remove items that cannot be washed or dried. Such items can increase the vibration during the spin cycle. Press (START/PAUSE) button to start the operation.Hitachi HB-B101 washer error code Display CauseHow to reset ( - - E ) and beep beep beep There is no bread pan in the bread maker, or the bread pan has not been properly positioned.Put the bread pan in the bread maker again: you should clearly hear a click. Check that the display is no longer showing, and press the START button again. ( - - H ) and beep beep beepThe oven area is hot (above 100F/38C). This may occur during continuous use.Open the lid to cool the oven area for 30 minutes to 1 hour. If the ventilating is finished, START can be set after 5-10 minutes again. When the indication goes out, press the START button. ( - - L ) and beep beep beepThe oven area is cool (under 14F/-10C)Remove the unit to warm place. When the indication goes out, press the START button.Hitachi HWF-800X washer error code FaultCauseAction Control lights do not come on.A fuse has triggered.Switch on / replace the fuse. Call Customer Service if this fault is repeated. Power failure.An interrupted programme will be resumed when the power returns. If the washing is to be removed, proceed Plug is loose or not inserted.Insert the plug. The START indicator light flashes. (Program does not start) Loading door not closed properly.Check whether laundry is trapped in door. Close the loading door (a click should be heard). The ACTIVE indicator light flashes. (Water does enter the machine or detergent is not washed away.)Water tap not turned on.Turn on water tap. Supply hose kinked or trapped.Eliminate the cause. Strainers in supply hose clogged.Clean the strainers; The END indicator light flashes. (Washing lye is not completely drained.)Loose debris is blocking the pump.Clean the pump Fluff-producing laundry was washed. The water drainage pipe or drain hose is blocked.Clean the water drainage pipe and/or drain hose. Hitachi SF-140SV washer error code Error codeDescriptionThings to checkSolution C1Water is not supplied Is the tap open?Check the tap, water supply inlet filter, water pipes, and water supply hose. Has dirt collected in the water supply inlet filter? Are the water pipes or water supply hose frozen? Has the water supply been disrupted? C2Water does not drain Is the drain hose blocked? Check the drain hose and the drain outlet. Is the drain hose twisted, crushed, or frozen? Is the drain hose connected correctly? Is the drain outlet too high? C3The tub does not spin Is the lid open?Close the lid. C4 Is the laundry all on one side of the tub?Add a few more items to wash. If there is only one item in the tub, it is likely to become unbalanced.) Does the laundry include too many thick items like cotton blankets or jeans or too many large items like sheets? Is the washing machine wobbling, or is the floor under the washing machine slanted? Are there any unwashable things in the tub? C5The lid cannot be locked Is the lid closed?Check that the lid is completely closed. Check that there are no foreign objects in the lock. Are there any foreign objects in the lock? C9The lid lock cannot be released Are there any foreign objects in the lock?Turn the power off and then on again and wait a little while. If the lid is still locked, contact a service center for repair. C0Laundry overload Check if the laundry overload?Decrease the laundry C1The spinning speed is not reached the specified value. Check if the amount of powder detergent is too much?Check the amount of powder detergent putting, check the drain hose and installation of drain hose. Check if the drain hose is clogged? Check if the drain hose is installed correctly? Hitachi SF-P90DJ washer error code SymptomsIndicator flashesCheck itemsRestart Not running Check if electricity is cut off? Make sure power is on Check if fuse or circuit break is blown? Make sure the power cord is properly plugged Check if power cord is properly plugged? Not filling in waterC1 - (Not filled with water after 30 minutes.) Is the water tap closed? Press START/PAUSE button and eliminate the cause of the trouble Is city water frozen or water supply stopped? Does dust clog the screen in the water supply inlet? Not drainingC2 (Drain isn't completed with in 10 minutes) Is the drain hose crushed? Is the remaining water in the built-in drain hose frozen Not spinningC3 Is the lid open? Close the lid. C4 Are clothes placed to one side? Evenly distribute the load and close the lid. Hitachi washing machines come in various configurations to suit your laundry needs. They offer top-loading and front-loading models with a range of load capacities and advanced wash programs. Hitachi washing machines are praised for their efficient cleaning performance and user-friendly controls, making laundry tasks a breeze. E01: Door Lock Error The washing machine cant lock or unlock the door correctly. E02: Water Inlet Problem Issues detected with water filling into the drum, possibly due to valve malfunction or blockages. E03: Drain Error The machine is having difficulty draining water, potentially due to a blocked drain pump or hose. E04: Water Overflow The machine detects an overflow situation, possibly due to a faulty water level sensor. E05: Motor Error The motor is malfunctioning or not responding correctly. E06: Temperature Sensor Error Issues detected with the temperature sensor, affecting water heating. E07: Unbalanced Load The laundry load in the drum is imbalanced, causing potential spin issues. E08: Heating Element Fault The water heating element is not functioning correctly. E09: Software or Control Board Error The washing machines control board or software is malfunctioning or not communicating correctly. E10: Spin Cycle Error The machine is having problems during the spin cycle, possibly due to an unbalanced load or motor issues. E11: Door Seal Fault The door seal or gasket is compromised, potentially leading to water leaks during the wash cycle. E12: Communication Error Theres an internal communication problem between the various modules or components of the washing machine. E13: Water Protection Error The washing machines water protection system has been triggered, indicating potential leaks or overflows. E14: Water Hardness Sensor Fault The sensor that detects water hardness (in machines equipped with such a feature) is malfunctioning. E15: Detergent Dispenser Error The detergent or softener dispenser is not functioning correctly or is clogged. E16: User Interface Fault The control panel or touch interface is malfunctioning or unresponsive. E17: Power Supply Issue There are irregularities in the power supply, potentially due to surges or interruptions. E18: Drum Movement Error Issues detected with the movement of the drum, potentially due to worn out bearings or obstructions. E19: Flow Meter Fault The flow meter, which measures water intake, is malfunctioning or providing inaccurate readings. E20: Pressure Switch Error The pressure switch, which monitors the water level in the drum, is not functioning correctly. Washing Machine is useful Product from Every home And it is a product used in every home Sometimes it contains an error code. We can fix some error codes at home and we need to call a technician to fix some error codes. In this post you will find all the error codes of Hitachi washing machine and I hope you will benefit a lot from this post. Error CodesSolutionC01Water is not supplied. Check water tap, water inlet filter, water line and water hose.C02Water is not drained. Check drain hose, drain pump and drain outlet. If C02 still appears after removing the possible cause, please contact your local service center for repair.C03The door is open. Make sure the door stopper is retracted.C04Spin cycle does not function. Add a few clothes to the drum. (Spinning only one item may result in imbalance.)C08Door lock does not function. Check the door and close firmly.C09Door unlock does not function. Laundry may be exceeded 8 kg and door is pushed from inside. Switch power off and press the door to close tightly. Hold that position and switch power on, and wait until the door lock is released.C14Malfunction of vibration sensor. There may be other appliances that generate electrical noise near the washing machine. Move the appliances away from the washing machine.C18Spin cycle does not function. The drain hose may not be set correctly. There may be too much foam in the drum. Same as in C02 & C20.C19Over loaded. Laundry may exceed rated capacity.C20Drum does not rotate. To eliminate the excessive foam, switch off the washing machine and wait for about 30 mins, then switch on again and select Rinse & Spin without adding detergent.C30Water flows out from drain hose while washing. Drain hose end is set lower than 60 cm.CHThe spinning speed is not reached the speci ed value. Check the amount of powder detergent putting, check the drain hose and installation of drain hose.COLaundry overload. Decrease the laundry.CFCF means communication faultFLVerify that the water is turned on. Hitachi Washing Machine Troubleshooting ProblemPossible causeDoes not operateThe power plug is not inserted in the power outlet. There is a power outage. The Delay Timer has been set.It is wet, even though it is the fi rst time to use it (drain hose, tub, etc.)There may be moisture or water left in the tub or hoses from the performance test before shipping from the factory.The remaining time increases during operationThe remaining time is adjusted to compensate for the speed of the incoming water.Water is added again during the washing processWater is added automatically up to the set water level if the water level falls because water is absorbed by the laundry.Wash time is longer than the time that was set manuallyIf the water pressure is low, the operating time may increase due to a longer water supply time.The washing machine stops during the spin cycle and starts adding waterIf the laundry is extremely off balance when the spin cycle starts, the spin cycle stops and the rinse cycle starts to rebalance the laundry. After the load is rebalanced, the spin cycle starts again.During the spin cycle, the tub spins increasingly fasterThis is to more eff ciently remove water.Sound of water is heard when the tub movesThat is the sound of water in the Liquid Load Balancer, which is used for balancing when the tub is spinning.The tub does not fi ll up when water is added from a bucketTurn on the power. When the power is turned on the drain valve closes and you can fi ll the tub with water.The lid does not openWhen the lid lock indicator is lit, the lid is locked and cannot be opened.The strength of water fi ow does not change in spite of changing the indicatorIt may not change the strength of water flow according to the process and the load amount. It is not abnormal Hitachi Washing Machine Manual PDF Whirlpool Refrigerator ARB-884SGYS Electric DiagramHVAC Solution

**Hitachi error code c2. Hitachi washing machine error code c02. Hitachi washing machine error code c9. Hitachi washing machine error code c20. Hitachi washing machine error code. Hitachi washing machine error code c3. Hitachi washing machine c2 error. Hitachi washing machine error code c8.**