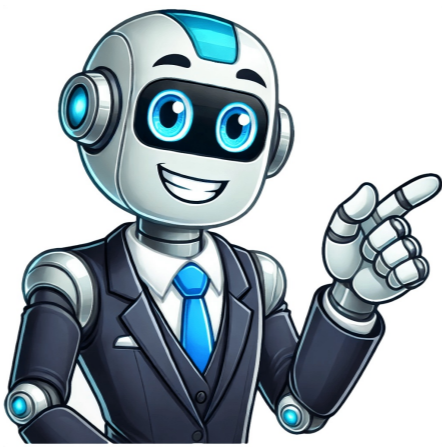


I'm not a  
robot

































OWNER'S MANUALTheDiscovery 3300is a professional metaldetector. While the mostdifficult aspects of metal detectinghave been automated, it is asophisticated electronic device whichrequires an understanding of some basicfeatures and metal detecting concepts.If you do not have prior experience with ametal detector, we strongly recommend that you:1) Adjust the Sensitivity to a low setting in theevent of false signals. Always begin use at areduced sensitivity level; use at full sensitiv Summary of the content on the page No. 2 TABLE OF CONTENTS Terminology . . . . . 3 Assembly . . . . . 4-5 Batteries. . . . . 6 Quick-Start Demo . . . . . 7-8 Basic Operation . . . . . 9-12 All Metal . . . . . 10 Discrimination . . . . . 10 Notch . . . . . Summary of the content on the page No. 3 TERMINOLOGY The following terms are used throughout the manual, and are standard terminology among detectorists. ELIMINATION - Reference to a metal being "eliminated" means that the detector will not emit a tone, nor light up an indicator, when a specified object passes through the coil's detection field. DISCRIMINATION - When the detector emits different tones for different types of metals, and when the detector "eliminates" certain metals, we refer to this as the detector "discriminating" amon Summary of the content on the page No. 4 S-Rod Locking Collar Silver Button Searchcoil Cable ASSEMBLY Adjusting the Arm Rest Most people will find the standard position of the arm rest very comfortable. Very large forearms and short forearms (particularly children's arms), can be accommodated by moving the arm rest forward. The arm rest is adjustable to three positions. To adjust, remove the screw from the underside, then press the silver button and move the arm rest to one of the alternate positions. If you cannot fully depress the bu Summary of the content on the page No. 5 ASSEMBLY Assembly is easy and requires no tools. 1 Position detector upright. 1 LOCKING COLLAR 2rotate the LOCKING INTERNAL COLLAR fully in a counter CAM LOCK clockwise direction. SILVER BUTTON 3 Insert your finger inside the 1 MIDDLE STEM tube and make sure the INTERNAL CAM LOCK is S-ROD flush with the inside of the S-ROD MIDDLE STEM tube. 4 Insert the LOWER STEM into the S-ROD. 5 Rotate the LOWER STEM until the SILVER BUTTON locates in the hole. 16 Twist the LOCKING COLLAR fully in the cl Summary of the content on the page No. 6 BATTERIES Use ALKALINE batteries only. To install the batteries, 1 Remove the 1 battery cover by disengaging the clip at the back. 2 Align the polarity 1 of the batteries correctly, with the positive "+" toward the coil plug connection, as indicated by the + and - indicators on the housing. 3 Insert (2) 9-Volt ALKALINE batteries, with the contacts pointed inward, 1 and press down on the back of the batteries to snap them into place. Some brands of batteries will require moderate force to clear Summary of the content on the page No. 7 Q UICK-START DEMONSTRATION I. Supplies Needed • A Nail • A Quarter • A Pull-Tab from a beverage can • A Zinc Penny (dated after 1982) • A Nickel II. Position the Detector a. Place the detector on a table, with the searchcoil hanging over the edge, (or better, have a friend hold the detector, with the coil off the ground) b. Keep the searchcoil away from walls, floors, and metal objects. c. Remove watches, rings and other jewelry or metal objects from hands and wrists. d. Turn off appliances or 1 Summary of the content on the page No. 8 Q UICK-START DEMONSTRATION VI. Wave the Nail over the Searchcoil a. The Nail will not be detected. b. The Nail has been "Discriminated Out." VII. Press the "DISCRIMINATION- s " touch pad twice. Five "R"s are now displayed. VIII. Wave all objects over the Searchcoil The Nail and Pull-Tab will not be detected. The other objects will be detected with their own distinctive tones. IX. Press the NOTCH touch pad. A flashing "R" will appear under the 56/PT segment. X. Press the DISCRIMINATION-▲ touch pad twice. Five "R"s are now displayed. VIII. Wave all objects over the Searchcoil The Nail and Pull-Tab will not be detected. The other objects will be detected with their own distinctive tones. IX. Press the NOTCH touch pad. A flashing "R" will appear under the 56/PT segment. X. Press the DISCRIMINATION-▲ touch pad three times. The flashing "R" will move to the ZINC segment. XI. Press the NOTCH touch pad again. The "R" will appear under zinc. XII. Wave the zinc penny over the searchcoil. The penny is discriminated out. XIII. Press the DISC A-M touch pad The detector returns to ALL-METAL mode. No "R"s are displayed. All types of metals will be detected. XIV. Wave the pull-tab over the coil. XV. Press the ZAP touch pad. An "R" will appear. XVI. Wave the pull-tab over the searchcoil again. The pull-tab (the most recently detected item) is eliminated from detection. XVII. Press the PINPOINT touch pad. Hold one of the metal objects motionless over the searchcoil. • All Metal objects are now detected. • Depth and Target indicator do not illuminate in this mode. One monotone sound indicates the presence of any type of metal. 8 + 1 2 3 4 5 6 7 8 9 10 11 12 13 14 15 16 17 18 19 20 21 22 23 24 If you are a professional detectorist or any detectorist looking forward to becoming specific on your search for precious items, the Bounty Hunter Discovery 3300 metal detector is perhaps the best device for the job.The detector has good functionality and features that also make it the appropriate device for beginners. This product is especially beneficial for hunting coins, relics, jewelry but is not the best for gold prospecting. In this article, you will find sufficient info on the features, benefits, design, appearance, and performance of this gadget. Now, let's get into a detailed review of the Bounty Hunter Discovery 3300 If you want to know...What features make Bounty Hunter 3300 excelDetailed information about its design and performanceAll the specifications of this metal detectorWhere the Discovery 3300 falls shortThe answers to the most common questionsThen definitely keep reading our review.The best metal detector?We're on a mission to review all the top metal detectors.Although Bounty Hunter Discovery 3300 is a good metal detector, it didn't make it to the top of our list mostly because of its complicated handling.The Bounty Hunter Discovery 3300 manufacturers aimed to proffer solutions to virtually all detectorists' common challenges on the field. Such challenges include different ground mineralization, which causes interference in detecting, often resulting in false signals and poor detection rate, desired target signals.Another challenge this detector aims to address is the reception of signals from all kinds of targets, especially when many of them are undesired.How has the Discovery 3300 proffer solutions to these challenges?The incorporation of ground balancing helps the user to detect with almost zero interference. You are able to quiet the chatter produced by terrains with high mineral compositions while detecting. The preset mode of this ground balancing automatically calibrates the device to adjust to the ground condition at hand; much more, in situations where the preset mode is not doing the trick, a manual option is available for your tweaking.The primary signal method employed by metal detectors is audio signals. But what sort of metal detecting would it be should the device give out the same audio tone for different items. The frustration of ending up digging an unwanted item will be undoing; the time wastage will be tiring. The wisdom of manufacturers in circumventing this problem is to design their detector with a different audio tone pitch, which will help the user determine the type of metal they are detecting and, if possible, their depths. On this wise, the Bounty Hunter Discovery 3300 is not an exception – maybe even better. While some other detectors may offer two to three tones, the Discovery 3300 offers four: low, medium, high, and bass tones. The detector gives off a low tone – when detecting small objects like nickels, pull tabs;medium tone – when detecting larger items like zinc pennies, screw caps;the high tone – when detecting items that have high conductivity and are non-ferrous, such as copper, brass, and silver;the bass tone – to help the user identify ferrous objects like steel and iron.Metal detectors primarily use sound signals to let the users know the type of metal they are detecting, but in practice, sound signals are not enough. So, manufacturers design a means to further help the user identify the type of metal they are detecting – Target ID.The Discovery 3300 runs its Target ID in a 3-digit number. When you're sweeping over an area, and you pass over an object, the metal detector will display a 3-digit number to help the user estimate the exact type of metal they are detecting – if not exact, this feature will get him close to being exact.How does this work?For instance, the object you're detecting is likely a large metal object should the target ID display is between 150-199; iron should the detector display target ID between 0-10; zinc or penny should the number be in the range of 62-65.The Discovery 3300 features 4 operating modes: All Metal, Notch, PinPoint, and Discrimination. There is other information that you may find indicating that there are indeed 5 operating modes. Still, we are chosen to pick 4 because one mode is only functional in the Discrimination mode.The All-Metal mode, as the name implies, means the device can detect all types of metal.The Notch mode (known as the custom mode) allows you to create a custom setting where you can eliminate certain metals from being detected.Pinpoint mode helps the user to find out the exact location of a target. The ground balance feature can affect your pinpointing accuracy; hence, ensure your ground balance is correctly calibrated before using the pinpoint mode.The Discrimination mode helps you to silent the noise of unwanted items (particularly ferrous objects) by increasing and decreasing the level of discrimination. In general, the discrimination and 7-segment target elimination. When you pass over an item that you deem undesirable, you can save yourself a time in the future by "zapping" the object. By using the Zap mode, the Discovery 3300 will keep signals from such an object mute.Zap mode is only used in Discrimination mode, and if so, it implies the intention is to weed out ferrous objects. Hence, the unwanted objects must register within the Target ID scale of Iron to Zinc for them to get zapped.Say you're trying to sharpen your reception on a specific target; it becomes frustrating having to constantly find them while moving the search coil.With this feature, however, you can pinpoint a target's specific location and narrow down the dig. This is similar to pinpoint. You're probably not unaware of pinpointing. Using the search coil when detecting requires movement but pinpointing (the No-Motion mode) allows you to focus on a specific area by holding the search coil still.A successful pinpointing will allow you to determine the size of the target.It is noteworthy that the no-motion mode can easily pick signals of larger or grouped multiple objects. The detector's inner coil will detect smaller and single objects easily when it passes over them.Note that the No-Motion mode does not necessarily mean an absolute lack of movement; in some cases, you may have to map out an area slightly larger than the search coil and carry on your pinpointing.There are almost zero detectors made for professionals that lack a manual ground balancing feature.It's a convenient feature for detecting on terrains with differing mineralization and difficult soil conductivity. Due to these ground conditions, there is a high level of interference and chatter that impedes smooth signal reception from targets.The preset ground balance is the detector's auto setting, which helps the user to hunt efficiently in its current ground condition, having automatically calibrated the detector. However, chances are you might still encounter difficulty in saltwater hunting, or there is a need to silence the interfering chatter in rocky, sandy, or salty terrains. In that case, the manual option of calibrating the ground balance to quell the possibility of false signals is available for you.Manual ground balancing may sometimes pose an easy mastering, but you get to have a hang of its operation with subsequent usage.The Bounty Hunter Discovery 3300 is a lightweight metal detector with a unique feature of a digital coin depth indication. This feature helps the user to identify how deep a target is buried while you can identify the value of the target in numbers with its digital 11-segment target ID.These values are easily seen on the visual target system LCD. The device is waterproof with 8 interchangeable waterproof coils with which you can go detecting in damp or shallow wet terrains. The device is designed with four audio tones that provide the user feedback on accurate target verification. In terrains with electromagnetic interference, the detector features touch sensitivity to curtail the interferences. In terrains with mineral composition, the detector features ground balance to offset its effect; this applies to saltwater, for instance.Its four operating modes thus exist to eliminate undesired items. There is the presence of a headphone jack, which is compatible with most headphones. Even though you get a padded armrest and a detector stand to make your usage easy and comfortable, the detector is a standalone device that is not supplied with accessories, such as headphones.The Bounty Hunter Discovery 3300 is a VLF single frequency unit, operating a frequency of 6.6 kHz. At that low frequency, the detector can penetrate the ground to a deep level. You can detect coins as deep as 8" but do you desire to go even deeper, then you can adjust the device's sensitivity, discrimination, and ground balance to search at greater depth and discover items that haven't been dug up for too long a while.Now, if you're new to this metal detector, there are a few recommendations you should have in mind before starting to use it:It is wise to always begin your usage of the device at a reduced sensitivity level. This implies that you should probably adjust the sensitivity to a low setting if you're getting a false signal. You should only use full sensitivity as you become familiar with the detector.It's common knowledge that metal detectors are for the field, not for indoor use. Does it become useless when used indoors? Not entirely, but you could say it becomes inefficient. Why? Most household appliances emit electromagnetic energy, which produces interference to metal detecting. However, if you desire to use the device for indoor detecting, turn down the sensitivity and keep appliances such as televisions, computers, and microwaves away from the search coil. If your metal detector keeps signaling erratically, you should also consider turning off other appliances and lights. Areas containing metals, such as floors and walls, should also be avoided.Heavy-duty batteries are not advisable. Most metal detectors run on alkaline batteries only.Read the User's Manual.While the overall quality of the Discovery 3300 is something to write home about, its build quality is somewhat compromising. It may feel flimsy in hand, but this is not a general issue with all users. But if we must do an honest review, the metal detector is quite fragile, considering the extreme carefuleess required in extending the shaft to full-length or the issues that arise with its battery compartment. This limitation may not be a raise a cause for alarm due to its 5-year warranty. Within these years after purchase, you can have your detector repaired or replaced should any critical issue arise.The detectors' shaft and search coil are waterproof, but the control box and coil connection are not waterproof. Hence, you are safe to go water detecting in shallow water. You will do well to avoid accidental splashes so that the detector's wrong parts don't get wet.Generally, ground conditions affect metal detectors, and the Discovery 3300 is not an exception. Saltwater has mineral compositions that make metal detecting frustrating in such terrain, but with the Bounty Hunter Discovery 3300, you can manually adjust to this terrain with the ground balancing feature.Gold detectors generally have a high operating frequency. Therefore, gold detecting might pose a significant challenge with the Bounty Hunter Discovery 3300 because of its 6.6 kHz operating frequency.Amongst the Bounty Hunter's Discovery series, the Discovery 3300 is the detector with the deepest detection at 11" deep for coin-sized objects and up to 4" deep for objects larger than coins.The First Texas Products Company owns Bounty Hunter metal detector technology, including Fisher Labs and Teknetics, to name a few. As earlier opined, the Discovery 3300 is the most advanced of the Bounty Hunter Discovery series. It is designed with advanced features that make it worthwhile for advanced or professional users; this is not to exclude new detectorists from purchasing the device, but they may find it challenging to operate these features. Nevertheless, with practice, a newbie will find it easy to handle. Three features of the Discovery 3300 put together make it stand out between valuable targets and undesired items. These features include the Target ID, Zap mode, and the operating modes (especially the Discrimination mode). While "zapping" makes it possible for the device to keep in memory targets to avoid signaling on in the offing, the Discrimination mode silences out ferrous objects from disturbing your detection speed, and the Target ID helps you to pick out the exact target for which you went out detecting.The additional beauty is you can control all the features present in this detector using its simple and clear operating system. I bet your interest is now peaked up to try out this product; you can check it out by (amazon link="B001230UMI" title="clicking here"). User Manuals, Guides and Specifications for your Bounty Hunter DISCOVERY 2200 Metal Detector. Database contains 4 Bounty Hunter DISCOVERY 2200 Manuals (available for free online viewing or downloading in PDF): Owner's manual. Disclosure: This post contains affiliate links and I may earn a small commission if you purchase through these links. If you're in the market for an upgrade to your old, analog metal detector, you'll need to keep a few things in mind: budget, quality, and warranty. Luckily for you, there's a metal detector that comes to mind, the Bounty Hunter Discovery 3300. The Discovery 3300 is the most advanced model of the series, and as a professional metal detector, it has the build to keep expert and intermediate users busy. Priced well below its comparable alternatives, the 3300 already has a lead in the game. ✓ Best Feature: Preset & Manual Ground Balance Worst Feature: Build quality Ideal For: Shallow Water, Gold, Coins, Jewelry, Relics, Beginners, Intermediates Preset & Manual Ground BalanceMotion & No-Motion ModesOperating ModesZap Target ID Our Verdict: It's our verdict that the Discovery 3300 metal detector is well worth its price tag. It's a mid-level unit that best suits intermediate users. Beginners will certainly get a taste of upgraded features if they're ready to learn the ins-and-outs of what it takes to detect with success. The Discovery 3300 is a professional metal detector set at a price point that attracts all types of metal detector hobbyists. However, its interface and upgrade in features for its price is especially appealing to beginners and intermediates. What about experts? If certainly has enough to keep an expert entertained, but if it's high frequency gold detecting that an expert wants, this may not be the metal detector for the job. The features that might attract an expert is the lightweight frame and easy-to-use interface. Overall, the 3300 is especially beneficial for long hunting sessions for relics, coins, jewelry, and any other goods you can dig up. The Bounty Hunter metal detector is a VLF single frequency unit that operates at 6.6 kHz. Its low frequency allows it to penetrate the ground at a greater depth. Minimum coin detection is 8", but since you can adjust for sensitivity, ground balance, and discrimination, you can essentially fine-tune the Discovery to search deeper and find treasures that haven't been dug up in years. As a professional unit, it makes sense that it has manual ground balance. As an entry-level model, it's astounding to have this feature. Whichever way you look at it, having manual ground balance is an excellent convenience. Many metal detectors in this price range may have a factory-set, preset ground balance, but when you need to quiet the chatter when hitting sandy, rocky, salty, or wet environments, having the ability to manually calibrate the detector to filter out false signals is a must-have. It's especially convenient if you go hunting in areas where soil conditions are constantly changing. Constantly having to find targets while moving the searchcoil can be a pain when you're trying to hone in on a positive signal. Having a no-motion mode will enable the user to target a specific location and narrow down the dig. Using the searchcoil in any of the detection modes requires movement except for PinPoint. PinPoint mode allows you to hold the searchcoil still while the 3300 focuses on that area. There will be some movement required as you draw an "X" or if you can outline an area larger than the searchcoil. Being able to determine what size target you have will depend on your ability to successfully pinpoint it. Larger or multiple objects grouped together should be able to easily disrupt the detection field of no-motion mode. Smaller and single objects will be detected when the inner coil passes over them. Depending on who you ask, the Discovery 3300 may have 5 or 4 operating modes. I say 4, because one mode can only be used in Discrimination mode. The main 4 detection modes are: All Metal, Discrimination, Notch, and PinPoint. All-Metal detects all types of metal. Discrimination allows for increasing and decreasing the level of discrimination to silence out ferrous objects. Notch mode is essentially a custom mode where you can specifically eliminate certain metals from detection. PinPoint allows you to stop motion to detect where a target's exact location is. Before using PinPoint mode, you should always check to make sure the 3300 is properly ground balanced. Zap mode is a feature that can only be used in Discrimination mode. While in Discrimination, you can pass over an object you consider as undesirable and "zap" it so that the 3300 knows to silence those signals on those objects with that Target ID. In order for these known and undesirable objects to be zapped, they must register within the Iron to Zinc segments on the Target ID scale. Any data that helps to quickly further identify the type of metal you're detecting, other than sound, is a great feature in my books. The Discovery 3300 metal detector has a Target ID feature in the form of a 3-digit number. When sweeping over an object, the metal detector will provide a 3-digit number to help you quickly estimate what type of metal it is. For example, if the Target ID pulls up between 0-10, it's likely iron. If it pulls up between 83-88, it could be a Wheat Penny. If it pulls up between 134-150, it could be a Silver Dollar. Audio tones play a large part in a detectorist's ability to determine what type of metal they've found and its possible depth. While many metal detectors may only offer two or three tones, the 3300 has four. It has a Bass tone that detects ferrous objects like iron and steel and sometimes the smallest nuggets of gold. The Low tone detects small objects like pull-tabs, nickels, and smaller gold nuggets. The Medium tone detects zinc pennies, larger gold, and screw caps. The High tone detects non-ferrous, high-conductivity objects like silver, brass, and copper. The build quality is only somewhat of an issue for users. Some said it feels flimsy, but many don't report any problems at all. From extending the shaft to full-length or issues with the battery compartment, seems the build quality could be more fragile than you think. However, the Bounty Hunter metal detector is covered by a 5-year manufacturer warranty. They will repair or replace your unit to rectify any issues you may have. You can go shallow water detecting with the Discovery 3300 as the searchcoil and shaft are waterproof. The control box and coil connection to it are not waterproof, so avoid splashes and accidents where it could get wet. You can try ground balancing to saltwater manually (yes, you have that feature!), and you must decrease sensitivity settings to quiet all the chatter that you may get. It will compromise your depth and detection success, but you may still be able to pick up a few items. Regardless of manufacturing tactics, VLFs on a single frequency will experience erratic or false signals in saltwater and wet sand conditions. However, you can avoid breaking waves on your searchcoil, make metal detector adjustments as necessary, and be sure to rinse the searchcoil off with water after use to improve success and detector longevity. There is a compartment door you must remove on the backside of the control box. The Discovery 3300 takes 2x 9V batteries, and you absolutely must use alkaline batteries only. The 9Vs are inserted into the compartment with contact points forward. You may have to exert a little muscle into it to clear the retaining tabs. Reattach the compartment door. The Discovery 3300 has an external speaker, so you don't have to use metal detector headphones if you don't want to. However, the detector is very loud and there is no volume adjustment. Headphones are always recommended for metal detecting for privacy and audio interpretation benefits, but you'll have to buy them separately and make sure they're compatible with the ¼" connection point. The Bounty Hunter Discovery 3300 metal detector has some excellent features that are valuable to the intermediate detectorist. Having manual ground balance, four audio tones, and its various detection modes offer versatile use in a range of environments for multiple types of targets. Its 2.5 lb weight is an extremely desirable feature as you can hunt longer than ever without the strain and fatigue that comes with hunting. However, where experts might want a little more out of their metal detector, beginners may find the Discovery 3300 offers just the right amount of an upgrade to kick their hunting to the next level. Back to Bounty Hunter Metal Detectors Last update on 2025-05-26 / Affiliate links / Images from Amazon Product Advertising API OWNER'S MANUALTheDiscovery 3300is a professional metaldetector. While the mostdifficult aspects of metal detectinghave been automated, it is asophisticated electronic device whichrequires an understanding of some basicfeatures and metal detecting concepts.If you do not have prior experience with ametal detector, we strongly recommend that you:1) Adjust the Sensitivity to a low setting in theevent of false signals. Always begin use at areduced sensitivity level; use at full sensitiv Summary of the content on the page No. 2 TABLE OF CONTENTS Terminology . . . . . 3 Assembly . . . . . 4-5 Batteries. . . . . 6 Quick-Start Demo . . . . . 7-8 Basic Operation . . . . . 9-12 All Metal . . . . . 10 Discrimination . . . . . 10 Notch . . . . . Summary of the content on the page No. 3 TERMINOLOGY The following terms are used throughout the manual, and are standard terminology among detectorists. ELIMINATION - Reference to a metal being "eliminated" means that the detector will not emit a tone, nor light up an indicator, when a specified object passes through the coil's detection field. DISCRIMINATION - When the detector emits different tones for different types of metals, and when the detector "eliminates" certain metals, we refer to this as the detector "discriminating" among different types of metals. Discrimination is an important feature of professional metal detectors. Discrimination allows the user to ignore trash and otherwise undesirable objects. NOTCH - Notching is the elimination of an item, or range of items, within the metallic spectrum. We "notch-out" an object, or objects, selectively. Objects to the left and right on the metallic spectrum can be retained using the notch technique. RELIC - A relic is an object of interest by reason of its age or its association with the past. Many relics are made of iron, but can also be made of bronze or precious metals. IRON - Iron is a common, low-grade metal that is an undesirable target in certain metal detecting applications. Examples of undesirable iron objects are old cans, pipes, bolts, and nails. Sometimes, the desired target is made of iron. Property markers, for instance, contain iron. Valuable relics can also be composed of iron, cannon balls, old armaments, and parts of old structures and vehicles can also be composed of iron. FERROUS - Metals which are made of, or contain, iron. PINPOINTING - Pinpointing is the process of finding the exact location of a buried object. Long-buried metals can appear exactly like the surrounding soil, and can therefore be very hard to isolate from the soil. PULL-TABS - bothersome trash items for treasure hunters. They come in many different shapes and sizes. Pull-tabs can be eliminated from detection, but some other valuable objects can have a magnetic signature similar to pull-tabs, and will also be eliminated when discriminating out pull-tabs. Discarded pull-tabs from beverage containers are the most GROUND BALANCE - Ground Balancing is the ability of the detector to ignore, or "see through," the earth's naturally occurring minerals, and only sound a tone when a metal object is detected. The Discovery 3300 incorporates proprietary Super-Scan™ circuitry to eliminate false signals from severe ground conditions 3 ASSEMBLY Lockin g Collar S-Rod Silver Button Searchcoil Cable Adjusting the Arm Rest Most people will find the standard position of the arm rest very comfortable. Very large forearms and short forearms (particularly children's arms), can be accommodated by moving the arm rest forward. The arm rest is adjustable to three positions. To adjust, remove the screw from the underside, then press the silver button and move the arm rest to one of the alternate positions. If you cannot fully depress the button with your finger, use a narrow object, such as the blunt end of a ballpoint pen. The arm rest must be twisted with moderate force to move it to an alternate position; this adjustment is usually made infrequently. If desired for added stability, re-install the screw. The screw is not re-installed in the furthest forward position. If the button becomes disengaged inside of the tube, remove the plastic cap at the end of the tube to access the clip inside. With a pair of needle-nose pliers, reengage the plastic pin. Then replace the plastic cap. 4 ASSEMBLY S-ROD LOCKING COLLAR INTERNAL CAM LOCK SILVER BUTTON MIDDLE STEM S-ROD MIDDLE STEM Assembly is easy and requires no tools. 1 Position detector upright. 2 Rotate the LOCKING COLLAR fully in a counter clockwise direction. 3 Insert your finger inside the tube and make sure the INTERNAL CAM LOCK is flush with the inside of the tube. 4 Insert the LOWER STEM into the S-ROD. 5 Rotate the LOWER STEM until the SILVER BUTTON locates in the hole. 6 Twist the LOCKING COLLAR fully in the clockwise direction until it locks. 7 If your detector has 3 tubes and 2 locking collars, repeat this process 8 on the Middle Stem. 8 Position the Lower Stem (the straight tube) with the Silver Button toward the back. Using the Bolt and Knurled Knob, attach the Searchcoil to the plastic extension protruding from the Lower Stem. 9 Press the button on the upper end of the Lower Stem, and slide the Lower Stem into the S-Rod. Adjust the Stem to a length that lets you maintain a comfortable upright posture, with your arm relaxed at your side, and the Searchcoil parallel to the ground in front of you. 10 Wind the Cable securely around the Stem. 11 Insert the Plug into the matching Connector on the right underside of the Detector Body. Be sure that the key-way and pins line up correctly. Caution: Do not force the plug in. Excess force will cause damage. To disconnect the cable, pull on the plug. Do not pull on the cable. 5 BATTERIES Use ALKALINE batteries only. To install the batteries: 1 Remove the battery cover by disengaging the clip at the back. 2 Align the polarity of the batteries correctly, with the positive "+" toward the coil plug connection, as indicated by the + and - indicators on the housing. 3 Insert (2) 9-Volt ALKALINE batteries, with the contacts pointed inward. 4 and press down on the back of the batteries to snap them into place. Some brands of batteries will require moderate force to clear the retaining tabs. 4 Replace the battery door. Most metal detector problems are due to improperly installed batteries, or the use of non-alkaline or discharged batteries. detector does not turn on, please check the batteries. 6 If the Q UICK-START DEMONSTRATION I. Supplies Needed • A Nail • A Quarter • A Pull-Tab from a beverage can • A Zinc Penny (dated after 1982) • A Nickel II. Position the Detector a. Place the detector on a table, with the searchcoil hanging over the edge, (or better, have a friend hold the detector, with the coil off the ground) b. Keep the searchcoil away from walls, floors, and metal objects. c. Remove watches, rings and other jewelry or metal objects from hands and wrists. d. Turn off appliances or lights that cause electromagnetic interference. e. Pivot the searchcoil back toward the detector body. III. Power Up Turn Ground Balance knob to pre-Set position. Press the POWER touch pad. IV. Wave each Object over the Searchcoil a. Notice a different tone for each object. Bass Tone: Nail Low Tone: Pull-Tab Medium Tone: Zinc Penny High Tone: Quarter b.Motion is required. Objects must be in motion over the searchcoil to be detected. V. Press the DISC A-M touch pad The detector will beep twice and 3 "R"s will appear under the iron indicators. Quick-Start Demo continued on next page 7 Q UICK-START DEMONSTRATION VI. Wave the Nail over the Searchcoil a. The Nail will not be detected. b. The Nail has been "Discriminated Out." VII. Press the "DISCRIMINATION-▲" touch pad twice. Five "R"s are now displayed. VIII. Wave all objects over the Searchcoil The Nail and Pull-Tab will not be detected. The other objects will be detected with their own distinctive tones. IX. Press the NOTCH touch pad. A flashing "R" will appear under the 56/PT segment. X. Press the DISCRIMINATION▲ touch pad three times. The flashing "R" will move to the ZINC segment. XI. Press the NOTCH touch pad again. The "R" will appear under zinc. XII. Wave the zinc penny over the searchcoil. The penny is discriminated out. XIII. Press the DISC A-M touch pad The detector returns to ALL-METAL mode. No "R"s are displayed. All types of metals will be detected. XIV. Wave the pull-tab over the coil. XV. Press the ZAP touch pad. An "R" will appear. XVI. Wave the pull-tab over the searchcoil again. The pull-tab (the most recently detected item) is eliminated from detection. XVII. Press the PINPOINT touch pad. Hold one of the metal objects motionless over the searchcoil. • All Metal objects are now detected. • Depth and Target indicator do not illuminate in this mode. One monotone sound indicates the presence of any type of metal. 8 + 1 2 3 4 5 6 7 8 9 10 11 12 13 14 15 16 17 18 19 20 21 22 23 24 If you are a professional detectorist or any detectorist looking forward to becoming specific on your search for precious items, the Bounty Hunter Discovery 3300 metal detector is perhaps the best device for the job.The detector has good functionality and features that also make it the appropriate device for beginners. This product is especially beneficial for hunting coins, relics, jewelry but is not the best for gold prospecting. In this article, you will find sufficient info on the features, benefits, design, appearance, and performance of this gadget. Now, let's get into a detailed review of the Bounty Hunter Discovery 3300 If you want to know...What features make Bounty Hunter 3300 excelDetailed information about its design and performanceAll the specifications of this metal detectorWhere the Discovery 3300 falls shortThe answers to the most common questionsThen definitely keep reading our review.The best metal detector?We're on a mission to review all the top metal detectors.Although Bounty Hunter Discovery 3300 is a good metal detector, it didn't make it to the top of our list mostly because of its complicated handling.The Bounty Hunter Discovery 3300 manufacturers aimed to proffer solutions to virtually all detectorists' common challenges on the field. Such challenges include different ground mineralization, which causes interference in detecting, often resulting in false signals and poor detection rate, desired target signals.Another challenge this detector aims to address is the reception of signals from all kinds of targets, especially when many of them are undesired.How has the Discovery 3300 proffer solutions to these challenges?The incorporation of ground balancing helps the user to detect with almost zero interference. You are able to quiet the chatter produced by terrains with high mineral compositions while detecting. The preset mode of this ground balancing automatically calibrates the device to adjust to the ground condition at hand; much more, in situations where the preset mode is not doing the trick, a manual option is available for your tweaking.The primary signal method employed by metal detectors is audio signals. But what sort of metal detecting would it be should the device give out the same audio tone for different items. The frustration of ending up digging an unwanted item will be undoing; the time wastage will be tiring. The wisdom of manufacturers in circumventing this problem is to design their detector with a different audio tone pitch, which will help the user determine the type of metal they are detecting and, if possible, their depths. On this wise, the Bounty Hunter Discovery 3300 is not an exception – maybe even better. While some other detectors may offer two to three tones, the Discovery 3300 offers four: low, medium, high, and bass tones. The detector gives off a low tone – when detecting small objects like nickels, pull tabs;medium tone – when detecting larger items like zinc pennies, screw caps;the high tone – when detecting items that have high conductivity and are non-ferrous, such as copper, brass, and silver;the bass tone – to help the user identify ferrous objects like steel and iron.Metal detectors primarily use sound signals to let the users know the type of metal they are detecting, but in practice, sound signals are not enough. So, manufacturers design a means to further help the user identify the type of metal they are detecting – Target ID.The Discovery 3300 runs its Target ID in a 3-digit number. When you're sweeping over an area, and you pass over an object, the metal detector will display a 3-digit number to help the user estimate the exact type of metal they are detecting – if not exact, this feature will get him close to being exact.How does this work?For instance, the object you're detecting is likely a large metal object should the target ID display is between 150-199; iron should the detector display target ID between 0-10; zinc or penny should the number be in the range of 62-65.The Discovery 3300 features 4 operating modes: All Metal, Notch, PinPoint, and Discrimination. There is other information that you may find indicating that there are indeed 5 operating modes. Still, we are chosen to pick 4 because one mode is only functional in the Discrimination mode.The All-Metal mode, as the name implies, means the device can detect all types of metal.The Notch mode (known as the custom mode) allows you to create a custom setting where you can eliminate certain metals from being detected.Pinpoint mode helps the user to find out the exact location of a target. The ground balance feature can affect your pinpointing accuracy; hence, ensure your ground balance is correctly calibrated before using the pinpoint mode.The Discrimination mode helps you to silent the noise of unwanted items (particularly ferrous objects) by increasing and decreasing the level of discrimination. In general, the discrimination and 7-segment target elimination. When you pass over an item that you deem undesirable, you can save yourself a time in the future by "zapping" the object. By using the Zap mode, the Discovery 3300 will keep signals from such an object mute.Zap mode is only used in Discrimination mode, and if so, it implies the intention is to weed out ferrous objects. Hence, the unwanted objects must register within the Target ID scale of Iron to Zinc for them to get zapped.Say you're trying to sharpen your reception on a specific target; it becomes frustrating having to constantly find them while moving the search coil.With this feature, however, you can pinpoint a target's specific location and narrow down the dig. This is similar to pinpoint. You're probably not unaware of pinpointing. Using the search coil when detecting requires movement but pinpointing (the No-Motion mode) allows you to focus on a specific area by holding the search coil still.A successful pinpointing will allow you to determine the size of the target.It is noteworthy that the no-motion mode can easily pick signals of larger or grouped multiple objects. The detector's inner coil will detect smaller and single objects easily when it passes over them.Note that the No-Motion mode does not necessarily mean an absolute lack of movement; in some cases, you may have to map out an area slightly larger than the search coil and carry on your pinpointing.There are almost zero detectors made for professionals that lack a manual ground balancing feature.It's a convenient feature for detecting on terrains with differing mineralization and difficult soil conductivity. Due to these ground conditions, there is a high level of interference and chatter that impedes smooth signal reception from targets.The preset ground balance is the detector's auto setting, which helps the user to hunt efficiently in its current ground condition, having automatically calibrated the detector. However, chances are you might still encounter difficulty in saltwater hunting, or there is a need to silence the interfering chatter in rocky, sandy, or salty terrains. In that case, the manual option of calibrating the ground balance to quell the possibility of false signals is available for you.Manual ground balancing may sometimes pose an easy mastering, but you get to have a hang of its operation with subsequent usage.The Bounty Hunter Discovery 3300 is a lightweight metal detector with a unique feature of a digital coin depth indication. This feature helps the user to identify how deep a target is buried while you can identify the value of the target in numbers with its digital 11-segment target ID.These values are easily seen on the visual target system LCD. The device is waterproof with 8 interchangeable waterproof coils with which you can go detecting in damp or shallow wet terrains. The device is designed with four audio tones that provide the user feedback on accurate target verification. In terrains with electromagnetic interference, the detector features touch sensitivity to curtail the interferences. In terrains with mineral composition, the detector features ground balance to offset its effect; this applies to saltwater, for instance.Its four operating modes thus exist to eliminate undesired items. There is the presence of a headphone jack, which is compatible with most headphones. Even though you get a padded armrest and a detector stand to make your usage easy and comfortable, the detector is a standalone device that is not supplied with accessories, such as headphones.The Bounty Hunter Discovery 3300 is a VLF single frequency unit, operating a frequency of 6.6 kHz. At that low frequency, the detector can penetrate the ground to a deep level. You can detect coins as deep as 8" but do you desire to go even deeper, then you can adjust the device's sensitivity, discrimination, and ground balance to search at greater depth and discover items that haven't been dug up for too long a while.Now, if you're new to this metal detector, there are a few recommendations you should have in mind before starting to use it:It is wise to always begin your usage of the device at a reduced sensitivity level. This implies that you should probably adjust the sensitivity to a low setting if you're getting a false signal. You should only use full sensitivity as you become familiar with the detector.It's common knowledge that metal detectors are for the field, not for indoor use. Does it become useless when used indoors? Not entirely, but you could say it becomes inefficient. Why? Most household appliances emit electromagnetic energy, which produces interference to metal detecting. However, if you desire to use the device for indoor detecting, turn down the sensitivity and keep appliances such as televisions, computers, and microwaves away from the search coil. If your metal detector keeps signaling erratically, you should also consider turning off other appliances and lights. Areas containing metals, such as floors and walls, should also be avoided.Heavy-duty batteries are not advisable. Most metal detectors run on alkaline batteries only.Read the User's Manual.While the overall quality of the Discovery 3300 is something to write home about, its build quality is somewhat compromising. It may feel flimsy in hand, but this is not a general issue with all users. But if we must do an honest review, the metal detector is quite fragile, considering the extreme carefuleess required in extending the shaft to full-length or the issues that arise with its battery compartment. This limitation may not be a raise a cause for alarm due to its 5-year warranty. Within these years after purchase, you can have your detector repaired or replaced should any critical issue arise.The detectors' shaft and search coil are waterproof, but the control box and coil connection are not waterproof. Hence, you are safe to go water detecting in shallow water. You will do well to avoid accidental splashes so that the detector's wrong parts don't get wet.Generally, ground conditions affect metal detectors, and the Discovery 3300 is not an exception. Saltwater has mineral compositions that make metal detecting frustrating in such terrain, but with the Bounty Hunter Discovery 3300, you can manually adjust to this terrain with the ground balancing feature.Gold detectors generally have a high operating frequency. Therefore, gold detecting might pose a significant challenge with the Bounty Hunter Discovery 3300 because of its 6.6 kHz operating frequency.Amongst the Bounty Hunter's Discovery series, the Discovery 3300 is the detector with the deepest detection at 11" deep for coin-sized objects and up to 4" deep for objects larger than coins.The First Texas Products Company owns Bounty Hunter metal detector technology, including Fisher Labs and Teknetics, to name a few. As earlier opined, the Discovery 3300 is the most advanced of the Bounty Hunter Discovery series. It is designed with advanced features that make it worthwhile for advanced or professional users; this is not to exclude new detectorists from purchasing the device, but they may find it challenging to operate these features. Nevertheless, with practice, a newbie will find it easy to handle. Three features of the Discovery 3300 put together make it stand out between valuable targets and undesired items. These features include the Target ID, Zap mode, and the operating modes (especially the Discrimination mode). While "zapping" makes it possible for the device to keep in memory targets to avoid signaling on in the offing, the Discrimination mode silences out ferrous objects from disturbing your detection speed, and the Target ID helps you to pick out the exact target for which you went out detecting.The additional beauty is you can control all the features present in this detector using its simple and clear operating system. I bet your interest is now peaked up to try out this product; you can check it out by (amazon link="B001230UMI" title="clicking here"). User Manuals, Guides and Specifications for your Bounty Hunter DISCOVERY 2200 Metal Detector. Database contains 4 Bounty Hunter DISCOVERY 2200 Manuals (available for free online viewing or downloading in PDF): Owner's manual. Disclosure: This post contains affiliate links and I may earn a small commission if you purchase through these links. If you're in the market for an upgrade to your old, analog metal detector, you'll need to keep a few things in mind: budget, quality, and warranty. Luckily for you, there's a metal detector that comes to mind, the Bounty Hunter Discovery 3300. The Discovery 3300 is the most advanced model of the series, and as a professional metal detector, it has the build to keep expert and intermediate users busy. Priced well below its comparable alternatives, the 3300 already has a lead in the game. ✓ Best Feature: Preset & Manual Ground Balance Worst Feature: Build quality Ideal For: Shallow Water, Gold, Coins, Jewelry, Relics, Beginners, Intermediates Preset & Manual Ground BalanceMotion & No-Motion ModesOperating ModesZap Target ID Our Verdict: It's our verdict that the Discovery 3300 metal detector is well worth its price tag. It's a mid-level unit that best suits intermediate users. Beginners will certainly get a taste of upgraded features if they're ready to learn the ins-and-outs of what it takes to detect with success. The Discovery 3300 is a professional metal detector set at a price point that attracts all types of metal detector hobbyists. However, its interface and upgrade in features for its price is especially appealing to beginners and intermediates. What about experts? If certainly has enough to keep an expert entertained, but if it's high frequency gold detecting that an expert wants, this may not be the metal detector for the job. The features that might attract an expert is the lightweight frame and easy-to-use interface. Overall, the 3300 is especially beneficial for long hunting sessions for relics, coins, jewelry, and any other goods you can dig up. The Bounty Hunter metal detector is a VLF single frequency unit that operates at 6.6 kHz. Its low frequency allows it to penetrate the ground at a greater depth. Minimum coin detection is 8", but since you can adjust for sensitivity, ground balance, and discrimination, you can essentially fine-tune the Discovery to search deeper and find treasures that haven't been dug up in years. As a professional unit, it makes sense that it has manual ground balance. As an entry-level model, it's astounding to have this feature. Whichever way you look at it, having manual ground balance is an excellent convenience. Many metal detectors in this price range may have a factory-set, preset ground balance, but when you need to quiet the chatter when hitting sandy, rocky, salty, or wet environments, having the ability to manually calibrate the detector to filter out false signals is a must-have. It's especially convenient if you go hunting in areas where soil conditions are constantly changing. Constantly having to find targets while moving the searchcoil can be a pain when you're trying to hone in on a positive signal. Having a no-motion mode will enable the user to target a specific location and narrow down the dig. Using the searchcoil in any of the detection modes requires movement except for PinPoint. PinPoint mode allows you to hold the searchcoil still while the 3300 focuses on that area. There will be some movement required as you draw an "X" or if you can outline an area larger than the searchcoil. Being able to determine what size target you have will depend on your ability to successfully pinpoint it. Larger or multiple objects grouped together should be able to easily disrupt the detection field of no-motion mode. Smaller and single objects will be detected when the inner coil passes over them. Depending on who you ask, the Discovery 3300 may have 5 or 4 operating modes. I say 4, because one mode can only be used in Discrimination mode. The main 4 detection modes are: All Metal, Discrimination, Notch, and PinPoint. All-Metal detects all types of metal. Discrimination allows for increasing and decreasing the level of discrimination to silence out ferrous objects. Notch mode is essentially a custom mode where you can specifically eliminate certain metals from detection. PinPoint allows you to stop motion to detect where a target's exact location is. Before using PinPoint mode, you should always check to make sure the 3300 is properly ground balanced. Zap mode is a feature that can only be used in Discrimination mode. While in Discrimination, you can pass over an object you consider as undesirable and "zap" it so that the 3300 knows to silence those signals on those objects with that Target ID. In order for these known and undesirable objects to be zapped, they must register within the Iron to Zinc segments on the Target ID scale. Any data that helps to quickly further identify the type of metal you're detecting, other than sound, is a great feature in my books. The Discovery 3300 metal detector has a Target ID feature in the form of a 3-digit number. When sweeping over an object, the metal detector will provide a 3-digit number to help you quickly estimate what type of metal it is. For example, if the Target ID pulls up between 0-10, it's likely iron. If it pulls up between 83-88, it could be a Wheat Penny. If it pulls up between 134-150, it could be a Silver Dollar. Audio tones play a large part in a detectorist's ability to determine what type of metal they've found and its possible depth. While many metal detectors may only offer two or three tones, the 3300 has four. It has a Bass tone that detects ferrous objects like iron and steel and sometimes the smallest nuggets of gold. The Low tone detects small objects like pull-tabs, nickels, and smaller gold nuggets. The Medium tone detects zinc pennies, larger gold, and screw caps. The High tone detects non-ferrous, high-conductivity objects like silver, brass, and copper. The build quality is only somewhat of an issue for users. Some said it feels flimsy, but many don't report any problems at all. From extending the shaft to full-length or issues with the battery compartment, seems the build quality could be more fragile than you think. However, the Bounty Hunter metal detector is covered by a 5-year manufacturer warranty. They will repair or replace your unit to rectify any issues you may have. You can go shallow water detecting with the Discovery 3300 as the searchcoil and shaft are waterproof. The control box and coil connection to it are not waterproof, so avoid splashes and accidents where it could get wet. You can try ground balancing to saltwater manually (yes, you have that feature!), and you must decrease sensitivity settings to quiet all the chatter that you may get. It will compromise your depth and detection success, but you may still be able to pick up a few items. Regardless of manufacturing tactics, VLFs on a single frequency will experience erratic or false signals in saltwater and wet sand conditions. However, you can avoid breaking waves on your searchcoil, make metal detector adjustments as necessary, and be sure to rinse the searchcoil off with water after use to improve success and detector longevity. There is a compartment door you must remove on the backside of the control box. The Discovery 3300 takes 2x 9V batteries, and you absolutely must use alkaline batteries only. The 9Vs are inserted into the compartment with contact points forward. You may have to exert a little muscle into it to clear the retaining tabs. Reattach the compartment door. The Discovery 3300 has an external speaker, so you don't have to use metal detector headphones if you don't want to. However, the detector is very loud and there is no volume adjustment. Headphones are always recommended for metal detecting for privacy and audio interpretation benefits, but you'll have to buy them separately and make sure they're compatible with the ¼" connection point. The Bounty Hunter Discovery 3300 metal detector has some excellent features that are valuable to the intermediate detectorist. Having manual ground balance, four audio tones, and its various detection modes offer versatile use in a range of environments for multiple types of targets. Its 2.5 lb weight is an extremely desirable feature as you can hunt longer than ever without the strain and fatigue that comes with hunting. However, where experts might want a little more out of their metal detector, beginners may find the Discovery 3300 offers just the right amount of an upgrade to kick their hunting to the next level. Back to Bounty Hunter Metal Detectors Last update on 2025-05-26 / Affiliate links / Images from Amazon Product Advertising API OWNER'S MANUALTheDiscovery 3300is a professional metaldetector. While the